



Datasheet for ABIN6243435
anti-NOTO antibody (C-Term)



[Go to Product page](#)

2 Images

Overview

Quantity:	400 µL
Target:	NOTO
Binding Specificity:	AA 200-234, C-Term
Reactivity:	Mouse
Host:	Rabbit
Clonality:	Polyclonal
Conjugate:	This NOTO antibody is un-conjugated
Application:	Western Blotting (WB)

Product Details

Immunogen:	This Mouse Noto antibody is generated from a rabbit immunized with a KLH conjugated synthetic peptide between 200-234 amino acids from the C-terminal region of Mouse Noto.
Clone:	RB51261
Isotype:	Ig Fraction
Purification:	This antibody is purified through a protein A column, followed by peptide affinity purification.

Target Details

Target:	NOTO
Alternative Name:	Noto (NOTO Products)
Background:	Transcription regulator acting downstream of both FOXA2 and T during notochord

Target Details

development. Required for node morphogenesis. Is essential for cilia formation in the posterior notochord (PNC) and for left-right patterning, acts upstream of FOXJ1 and RFX3 in this process and is required for the expression of various components important for axonemal assembly and function. Plays a role in regulating axial versus paraxial cell fate.

Molecular Weight: 26322

UniProt: [Q5TIS6](#)

Application Details

Application Notes: WB: 1:2000. WB: 1:4000

Restrictions: For Research Use only

Handling

Format: Liquid

Buffer: Purified polyclonal antibody supplied in PBS with 0.09 % (W/V) sodium azide.

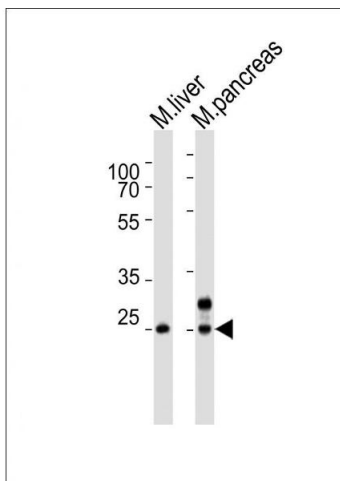
Preservative: Sodium azide

Precaution of Use: This product contains Sodium azide: a POISONOUS AND HAZARDOUS SUBSTANCE which should be handled by trained staff only.

Storage: 4 °C, -20 °C

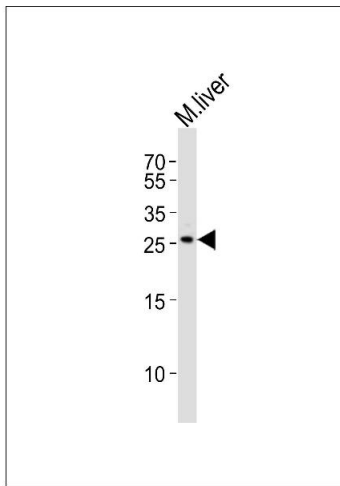
Expiry Date: 6 months

Images



Western Blotting

Image 1. Western blot analysis of lysates from mouse liver, mouse pancreas tissue lysate (from left to right), using Noto Antibody (C-term) (ABIN6243435 and ABIN6577908). (ABIN6243435 and ABIN6577908) was diluted at 1:4000 at each lane. A goat anti-rabbit IgG H&L(HRP) at 1:10000 dilution was used as the secondary antibody. Lysates at 20 µg per lane.



Western Blotting

Image 2. Western blot analysis of lysate from mouse liver tissue lysate, using Noto Antibody (C-term) (ABIN6243435 and ABIN6577908). (ABIN6243435 and ABIN6577908) was diluted at 1:2000. A goat anti-rabbit IgG H&L(HRP) at 1:10000 dilution was used as the secondary antibody. Lysate at 20 μ g.