

Datasheet for ABIN6243439
anti-PCGF6 antibody (C-Term)[Go to Product page](#)

2 Images

Overview

Quantity:	400 µL
Target:	PCGF6
Binding Specificity:	AA 261-295, C-Term
Reactivity:	Human
Host:	Rabbit
Clonality:	Polyclonal
Conjugate:	This PCGF6 antibody is un-conjugated
Application:	Western Blotting (WB), Immunofluorescence (IF)

Product Details

Immunogen:	This PCGF6 antibody is generated from a rabbit immunized with a KLH conjugated synthetic peptide between 261-295 amino acids from the C-terminal region of human PCGF6.
Clone:	RB51296
Isotype:	Ig Fraction
Purification:	This antibody is purified through a protein A column, followed by peptide affinity purification.

Target Details

Target:	PCGF6
Alternative Name:	PCGF6 (PCGF6 Products)
Background:	Transcriptional repressor. May modulate the levels of histone H3K4Me3 by activating KDM5D

Target Details

histone demethylase. Component of a Polycomb group (PcG) multiprotein PRC1-like complex, a complex class required to maintain the transcriptionally repressive state of many genes, including Hox genes, throughout development. PcG PRC1 complex acts via chromatin remodeling and modification of histones, it mediates monoubiquitination of histone H2A 'Lys-119', rendering chromatin heritably changed in its expressibility.

Molecular Weight: 39047

UniProt: [Q9BYE7](#)

Application Details

Application Notes: IF: 1:25. WB: 1:1000

Restrictions: For Research Use only

Handling

Format: Liquid

Buffer: Purified polyclonal antibody supplied in PBS with 0.09 % (W/V) sodium azide.

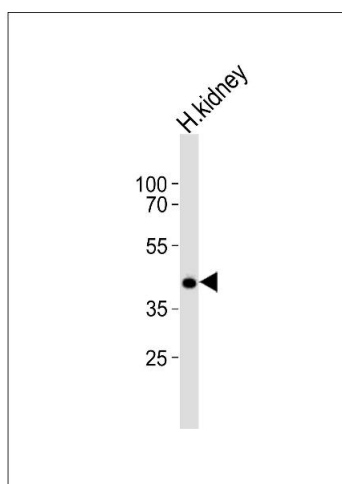
Preservative: Sodium azide

Precaution of Use: This product contains Sodium azide: a POISONOUS AND HAZARDOUS SUBSTANCE which should be handled by trained staff only.

Storage: 4 °C,-20 °C

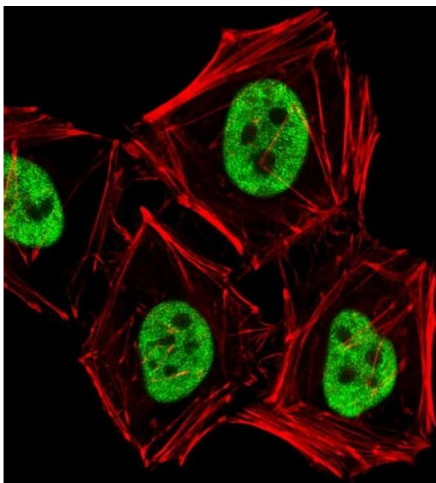
Expiry Date: 6 months

Images



Western Blotting

Image 1. Western blot analysis of lysate from human kidney tissue, using PCGF6 Antibody (C-term) (ABIN6243439 and ABIN6577713). (ABIN6243439 and ABIN6577713) was diluted at 1:1000. A goat anti-rabbit IgG H&L(HRP) at 1:10000 dilution was used as the secondary antibody. Lysate at 20 µg.



Immunofluorescence

Image 2. Fluorescent image of HeLa cells stained with PCGF6 Antibody (C-term) (ABIN6243439 and ABIN6577713). (ABIN6243439 and ABIN6577713) was diluted at 1:25 dilution. An Alexa Fluor 488-conjugated goat anti-rabbit IgG at 1:400 dilution was used as the secondary antibody (green). Cytoplasmic actin was counterstained with Alexa Fluor® 555 conjugated with Phalloidin (red).