

Datasheet for ABIN6243446
anti-LHPP antibody (AA 84-116)[Go to Product page](#)

1 Image

Overview

Quantity:	200 µL
Target:	LHPP
Binding Specificity:	AA 84-116
Reactivity:	Human
Host:	Rabbit
Clonality:	Polyclonal
Conjugate:	This LHPP antibody is un-conjugated
Application:	Western Blotting (WB)

Product Details

Immunogen:	This LHPP antibody is generated from a rabbit immunized with a KLH conjugated synthetic peptide between 84-116 amino acids from the Central region of human LHPP.
Clone:	RB55322
Isotype:	Ig Fraction
Predicted Reactivity:	B
Purification:	This antibody is purified through a protein A column, followed by peptide affinity purification.

Target Details

Target:	LHPP
Alternative Name:	LHPP (LHPP Products)

Target Details

Background:	Phosphatase that hydrolyzes imidodiphosphate, 3- phosphohistidine and 6-phospholysine. Has broad substrate specificity and can also hydrolyze inorganic diphosphate, but with lower efficiency (By similarity).
Molecular Weight:	29165
UniProt:	Q9H008

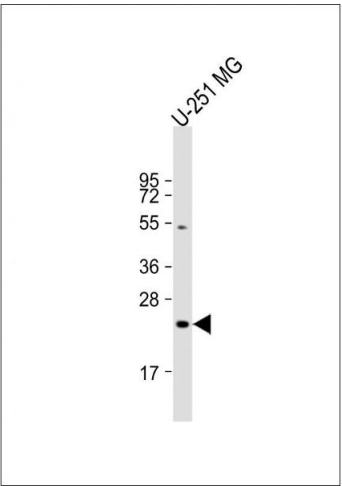
Application Details

Application Notes:	WB: 1:2000
Restrictions:	For Research Use only

Handling

Format:	Liquid
Buffer:	Purified polyclonal antibody supplied in PBS with 0.09 % (W/V) sodium azide.
Preservative:	Sodium azide
Precaution of Use:	This product contains Sodium azide: a POISONOUS AND HAZARDOUS SUBSTANCE which should be handled by trained staff only.
Storage:	4 °C,-20 °C
Expiry Date:	6 months

Images



Western Blotting

Image 1. Anti-LH Antibody (Center) at 1:2000 dilution + U-251 MG whole cell lysate Lysates/proteins at 20 µg per lane. Secondary Goat Anti-Rabbit IgG, (H+L), Peroxidase conjugated at 1/10000 dilution. Predicted band size : 29 kDa
Blocking/Dilution buffer: 5 % NFDN/TBST.