

Datasheet for ABIN6243447
anti-METTL14 antibody (AA 2-36)[Go to Product page](#)

2 Images

Overview

Quantity:	200 µL
Target:	METTL14
Binding Specificity:	AA 2-36
Reactivity:	Human, Mouse
Host:	Rabbit
Clonality:	Polyclonal
Conjugate:	This METTL14 antibody is un-conjugated
Application:	Western Blotting (WB), Immunohistochemistry (Paraffin-embedded Sections) (IHC (p)), Immunofluorescence (IF)

Product Details

Immunogen:	This METTL14 antibody is generated from a rabbit immunized with a KLH conjugated synthetic peptide between 2-36 amino acids from the human region of human METTL14.
Clone:	RB55130
Isotype:	Ig Fraction
Predicted Reactivity:	B
Purification:	This antibody is purified through a protein A column, followed by peptide affinity purification.

Target Details

Target:	METTL14
---------	---------

Target Details

Alternative Name:	METTL14 (METTL14 Products)
Background:	N6-methyltransferase that methylates adenosine residues of some mRNAs and acts as a regulator of the circadian clock and self-renewal of embryonic stem cells. N6-methyladenosine (m6A), which takes place at the 5'-[AG]GAC-3' consensus sites of some mRNAs, plays a role in the efficiency of mRNA splicing and processing and mRNA stability. M6A regulates the length of the circadian clock: acts as a early pace-setter in the circadian loop M6A also acts as a regulator of mRNA stability: in embryonic stem cells (ESCs), m6A methylation of mRNAs encoding developmental regulators, results in transcript destabilization, maintaining the ground state of ESCs, thereby promoting self-renewal of ESCs.

Molecular Weight:	52150
-------------------	-------

UniProt:	Q9HCE5
----------	------------------------

Application Details

Application Notes:	WB: 1:2000. IHC-P: 1:250
--------------------	--------------------------

Restrictions:	For Research Use only
---------------	-----------------------

Handling

Format:	Liquid
---------	--------

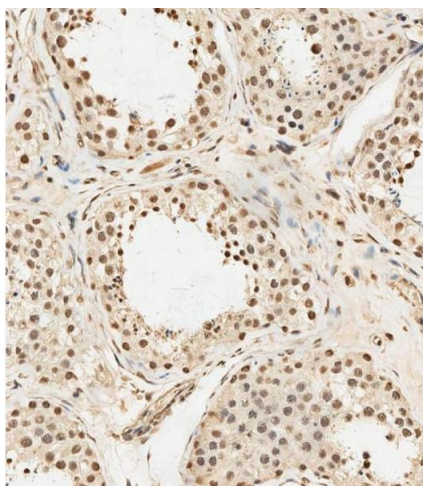
Buffer:	Purified polyclonal antibody supplied in PBS with 0.09 % (W/V) sodium azide.
---------	--

Preservative:	Sodium azide
---------------	--------------

Precaution of Use:	This product contains Sodium azide: a POISONOUS AND HAZARDOUS SUBSTANCE which should be handled by trained staff only.
--------------------	--

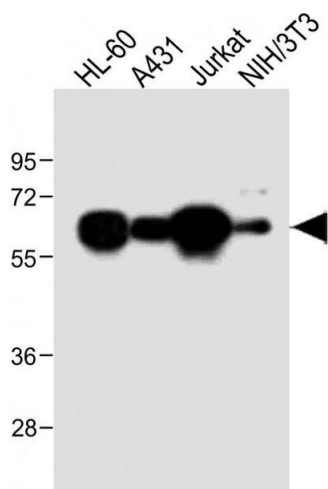
Storage:	4 °C,-20 °C
----------	-------------

Expiry Date:	6 months
--------------	----------



Immunohistochemistry (Paraffin-embedded Sections)

Image 1. (ABIN6243447 and ABIN6578904) staining METTL14 in human testis tissue sections by Immunohistochemistry (IHC-P - paraformaldehyde-fixed, paraffin-embedded sections). Samples were incubated with primary antibody (1/250) for 1 hours at room temperature. A undiluted biotinylated goat polyvalent antibody was used as the secondary antibody.



Western Blotting

Image 2. All lanes : Anti-METTL14 Antibody (N-Term) at 1:2000 dilution Lane 1: HL-60 whole cell lysate Lane 2: A431 whole cell lysate Lane 3: Jurkat whole cell lysate Lane 4: NIH/3T3 whole cell lysate Lysates/proteins at 20 µg per lane. Secondary Goat Anti-Rabbit IgG, (H+L), Peroxidase conjugated at 1/10000 dilution. Predicted band size : 52 kDa Blocking/Dilution buffer: 5 % NFDM/TBST.