

Datasheet for ABIN6243494
anti-ASH2L antibody (AA 237-270)[Go to Product page](#)

1 Image

Overview

Quantity:	400 µL
Target:	ASH2L
Binding Specificity:	AA 237-270
Reactivity:	Human, Mouse
Host:	Rabbit
Clonality:	Polyclonal
Conjugate:	This ASH2L antibody is un-conjugated
Application:	Western Blotting (WB)

Product Details

Immunogen:	This ASH2L antibody is generated from a rabbit immunized with a KLH conjugated synthetic peptide between 237-270 amino acids from the Central region of human ASH2L.
Clone:	RB51546
Isotype:	Ig Fraction
Purification:	This antibody is purified through a protein A column, followed by peptide affinity purification.

Target Details

Target:	ASH2L
Alternative Name:	ASH2L (ASH2L Products)
Background:	Component of the Set1/Ash2 histone methyltransferase (HMT) complex, a complex that

Target Details

specifically methylates 'Lys-4' of histone H3, but not if the neighboring 'Lys-9' residue is already methylated. As part of the MLL1/MLL complex it is involved in methylation and dimethylation at 'Lys-4' of histone H3. May function as a transcriptional regulator. May play a role in hematopoiesis.

Molecular Weight: 68723

UniProt: [Q9UBL3](#)

Application Details

Application Notes: WB: 1:1000

Restrictions: For Research Use only

Handling

Format: Liquid

Buffer: Purified polyclonal antibody supplied in PBS with 0.09 % (W/V) sodium azide.

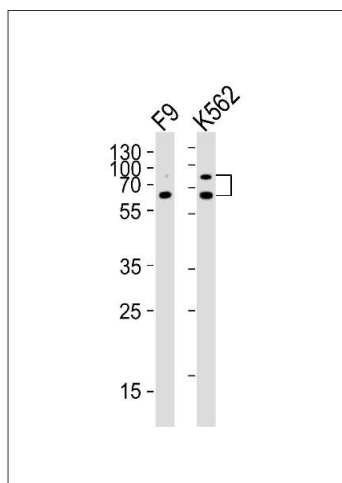
Preservative: Sodium azide

Precaution of Use: This product contains Sodium azide: a POISONOUS AND HAZARDOUS SUBSTANCE which should be handled by trained staff only.

Storage: 4 °C, -20 °C

Expiry Date: 6 months

Images



Western Blotting

Image 1. Western blot analysis of lysates from mouse F9, human K562 cell line (from left to right), using ASH2L Antibody (Center) (ABIN6243494 and ABIN6577738). (ABIN6243494 and ABIN6577738) was diluted at 1:1000 at each lane. A goat anti-rabbit IgG H&L(HRP) at 1:10000 dilution was used as the secondary antibody. Lysates at 20 µg per lane.