

Datasheet for ABIN6243511
anti-BCL2L10 antibody (AA 89-123)



[Go to Product page](#)

3 Images

Overview

Quantity:	200 µL
Target:	BCL2L10
Binding Specificity:	AA 89-123
Reactivity:	Human
Host:	Rabbit
Clonality:	Polyclonal
Conjugate:	This BCL2L10 antibody is un-conjugated
Application:	Western Blotting (WB), Immunofluorescence (IF), Flow Cytometry (FACS)

Product Details

Immunogen:	This BCL2L10 antibody is generated from a rabbit immunized with a KLH conjugated synthetic peptide between 89-123 amino acids from the Central region of human BCL2L10.
Clone:	RB57389
Isotype:	Ig Fraction
Purification:	This antibody is purified through a protein A column, followed by peptide affinity purification.

Target Details

Target:	BCL2L10
Alternative Name:	BCL2L10 (BCL2L10 Products)
Background:	Promotes cell survival. Suppresses apoptosis induced by BAX but not BAK.

Target Details

Molecular Weight: 23204

UniProt: [Q9HD36](#)

Pathways: [Positive Regulation of Endopeptidase Activity](#)

Application Details

Application Notes: IF: 1:25. WB: 1:2000. FC: 1:25

Restrictions: For Research Use only

Handling

Format: Liquid

Buffer: Purified polyclonal antibody supplied in PBS with 0.09 % (W/V) sodium azide.

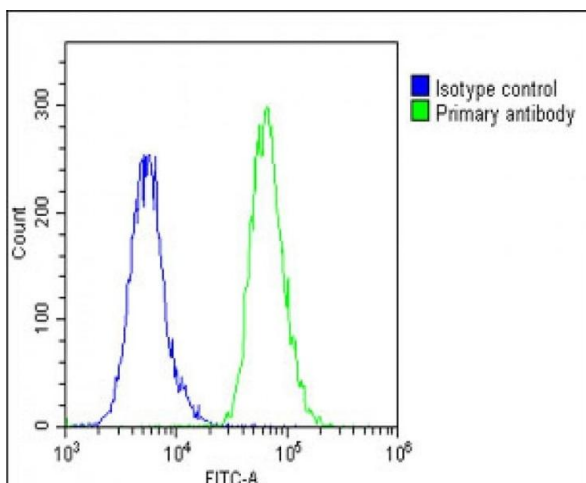
Preservative: Sodium azide

Precaution of Use: This product contains Sodium azide: a POISONOUS AND HAZARDOUS SUBSTANCE which should be handled by trained staff only.

Storage: 4 °C,-20 °C

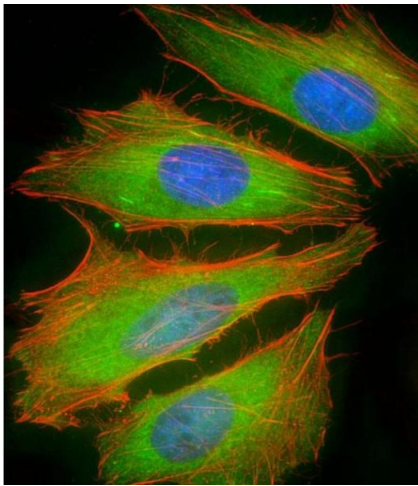
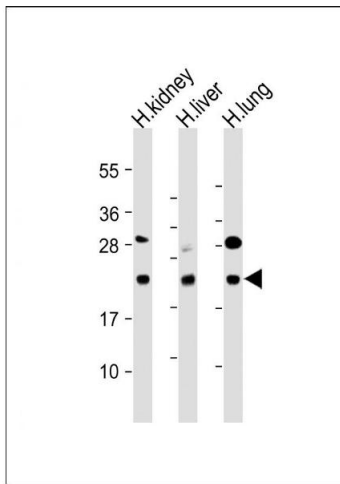
Expiry Date: 6 months

Images



Flow Cytometry

Image 1. Overlay histogram showing A549 cells stained with (ABIN6243511 and ABIN6578850)(green line). The cells were fixed with 2 % paraformaldehyde (10 min) and then permeabilized with 90 % methanol for 10 min. The cells were then incubated in 2 % bovine serum albumin to block non-specific protein-protein interactions followed by the antibody ((ABIN6243511 and ABIN6578850), 1:25 dilution) for 60 min at 37 °C. The secondary antibody used was Goat-Anti-Rabbit IgG, DyLight® 488 Conjugated Highly Cross-Adsorbed(1583138) at 1/200 dilution for 40 min at 37 °C. Isotype control antibody (blue line) was rabbit IgG1 (1 µg/1x10⁶ cells) used under the same conditions. Acquisition



of >10,000 events was performed.

Western Blotting

Image 2. All lanes : Anti-BCL2L10 Antibody (Center) at 1:2000 dilution Lane 1: Human kidney lysate Lane 2: Human liver lysate Lane 3: Human lung lysate Lysates/proteins at 20 µg per lane. Secondary Goat Anti-Rabbit IgG, (H+L), Peroxidase conjugated at 1/10000 dilution. Predicted band size : 22 kDa Blocking/Dilution buffer: 5 % NFDm/TBST.

Immunofluorescence

Image 3. Immunofluorescent analysis of 4 % paraformaldehyde-fixed, 0.1 % Triton X-100 permeabilized HeLa (human cervical epithelial adenocarcinoma cell line) cells labeling BCL2L10 with (ABIN6243511 and ABIN6578850) at 1/25 dilution, followed by Dylight® 488-conjugated goat anti-rabbit IgG (NK179883) secondary antibody at 1/200 dilution (green). Immunofluorescence image showing cytoplasm and nucleus staining on HeLa cell line. Cytoplasmic actin is detected with Dylight® 554 Phalloidin (PD18466410) at 1/100 dilution (red). The nuclear counter stain is DI (blue).