

Datasheet for ABIN6243512  
**anti-BMPR2 antibody (N-Term)**[Go to Product page](#)

## 2 Images

## Overview

Quantity:	400 µL
Target:	BMPR2
Binding Specificity:	AA 27-56, N-Term
Reactivity:	Human, Mouse
Host:	Rabbit
Clonality:	Polyclonal
Conjugate:	This BMPR2 antibody is un-conjugated
Application:	Flow Cytometry (FACS), Immunohistochemistry (Paraffin-embedded Sections) (IHC (p))

## Product Details

Immunogen:	This BMPR2 antibody is generated from rabbits immunized with a KLH conjugated synthetic peptide between 27~56 amino acids from the N-terminal region of human BMPR2.
Clone:	RB1806
Isotype:	Ig Fraction
Purification:	This antibody is prepared by Saturated Ammonium Sulfate (SAS) precipitation followed by dialysis against PBS.

## Target Details

Target:	BMPR2
Alternative Name:	BMPR2 ( <a href="#">BMPR2 Products</a> )

## Target Details

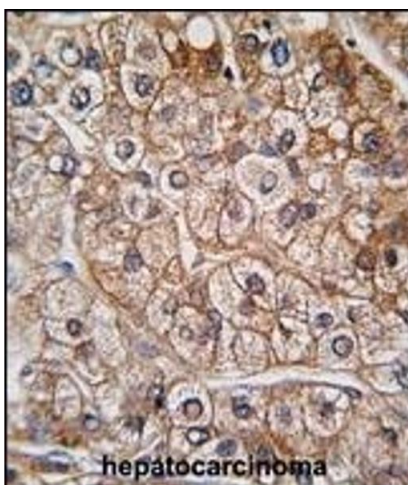
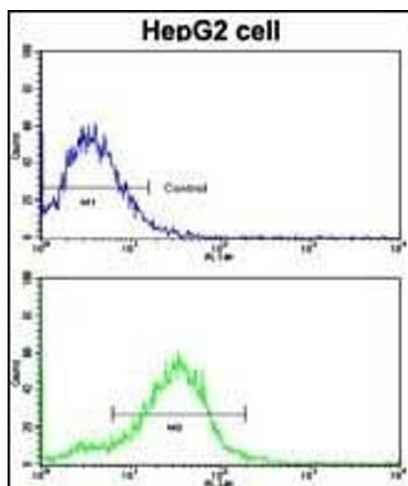
Background:	BMPR2 is a member of the bone morphogenetic protein (BMP) receptor family of transmembrane serine/threonine kinases. The ligands of this receptor are BMPs, which are members of the TGF-beta superfamily. BMPs are involved in endochondral bone formation and embryogenesis. These proteins transduce their signals through the formation of heteromeric complexes of 2 different types of serine (threonine) kinase receptors: type I receptors of about 50-55 kD and type II receptors of about 70-80 kD. Type II receptors bind ligands in the absence of type I receptors, but they require their respective type I receptors for signaling, whereas type I receptors require their respective type II receptors for ligand binding. Mutations in BMPR2 have been associated with primary pulmonary hypertension.
Molecular Weight:	115201
NCBI Accession:	<a href="#">NP_001195</a>
UniProt:	<a href="#">Q13873</a>
Pathways:	<a href="#">Growth Factor Binding</a>

## Application Details

Application Notes:	IHC-P: 1:50~100. FC: 1:10~50
Restrictions:	For Research Use only

## Handling

Format:	Liquid
Buffer:	Purified polyclonal antibody supplied in PBS with 0.09 % (W/V) sodium azide.
Preservative:	Sodium azide
Precaution of Use:	This product contains Sodium azide: a POISONOUS AND HAZARDOUS SUBSTANCE which should be handled by trained staff only.
Storage:	4 °C, -20 °C
Expiry Date:	6 months



### Flow Cytometry

**Image 1.** Flow cytometric analysis of HepG2 cells using BR2 Antibody (N-term)(bottom histogram) compared to a negative control cell (top histogram). FITC-conjugated goat-anti-rabbit secondary antibodies were used for the analysis.

### Immunohistochemistry (Paraffin-embedded Sections)

**Image 2.** Formalin-fixed and paraffin-embedded human hepatocarcinoma tissue reacted with BR2 antibody (N-term), which was peroxidase-conjugated to the secondary antibody, followed by DAB staining. This data demonstrates the use of this antibody for immunohistochemistry, clinical relevance has not been evaluated.