

Datasheet for ABIN6243513  
**anti-KCTD4 antibody (AA 160-191)**[Go to Product page](#)

## 1 Image

## Overview

Quantity:	400 µL
Target:	KCTD4
Binding Specificity:	AA 160-191
Reactivity:	Human
Host:	Rabbit
Clonality:	Polyclonal
Conjugate:	This KCTD4 antibody is un-conjugated
Application:	Western Blotting (WB)

## Product Details

Immunogen:	This KCTD4 antibody is generated from a rabbit immunized with a KLH conjugated synthetic peptide between 160-191 amino acids from the Central region of human KCTD4.
Clone:	RB48456
Isotype:	Ig Fraction
Predicted Reactivity:	B, M
Purification:	This antibody is purified through a protein A column, followed by peptide affinity purification.

## Target Details

Target:	KCTD4
Alternative Name:	KCTD4 ( <a href="#">KCTD4 Products</a> )

## Target Details

Molecular Weight: 29967

UniProt: [Q8WVF5](#)

## Application Details

Application Notes: WB: 1:1000

Restrictions: For Research Use only

## Handling

Format: Liquid

Buffer: Purified polyclonal antibody supplied in PBS with 0.09 % (W/V) sodium azide.

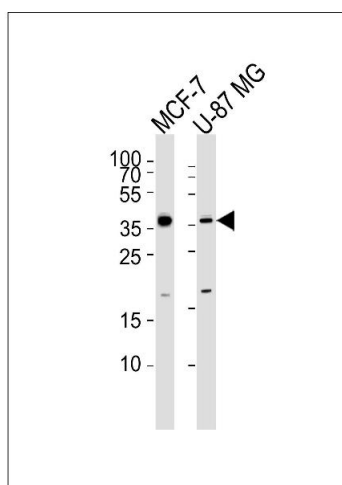
Preservative: Sodium azide

Precaution of Use: This product contains Sodium azide: a POISONOUS AND HAZARDOUS SUBSTANCE which should be handled by trained staff only.

Storage: 4 °C, -20 °C

Expiry Date: 6 months

## Images



### Western Blotting

**Image 1.** Western blot analysis of lysates from MCF-7, U-87 MG cell line (from left to right), using KCTD4 Antibody (Center) (ABIN6243513 and ABIN6577512). (ABIN6243513 and ABIN6577512) was diluted at 1:1000 at each lane. A goat anti-rabbit IgG H&L(HRP) at 1:5000 dilution was used as the secondary antibody. Lysates at 35 µg per lane.