

Datasheet for ABIN6243540  
**anti-PDE1A antibody (AA 23-57)**[Go to Product page](#)

## 1 Image

## Overview

Quantity:	200 µL
Target:	PDE1A
Binding Specificity:	AA 23-57
Reactivity:	Mouse
Host:	Rabbit
Clonality:	Polyclonal
Conjugate:	This PDE1A antibody is un-conjugated
Application:	Western Blotting (WB)

## Product Details

Immunogen:	This PDE1A antibody is generated from a rabbit immunized with a KLH conjugated synthetic peptide between 23-57 amino acids from human PDE1A.
Clone:	RB53388
Isotype:	Ig Fraction
Purification:	This antibody is purified through a protein A column, followed by peptide affinity purification.

## Target Details

Target:	PDE1A
Alternative Name:	PDE1A ( <a href="#">PDE1A Products</a> )
Background:	Cyclic nucleotide phosphodiesterase with a dual- specificity for the second messengers cAMP

## Target Details

and cGMP, which are key regulators of many important physiological processes. Has a higher affinity for cGMP than for cAMP.

Molecular Weight: 61252

UniProt: [P54750](#)

Pathways: [Neurotrophin Signaling Pathway](#), [cAMP Metabolic Process](#), [G-protein mediated Events](#), [Interaction of EGFR with phospholipase C-gamma](#)

## Application Details

Application Notes: WB: 1:2000

Restrictions: For Research Use only

## Handling

Format: Liquid

Buffer: Purified polyclonal antibody supplied in PBS with 0.09 % (W/V) sodium azide.

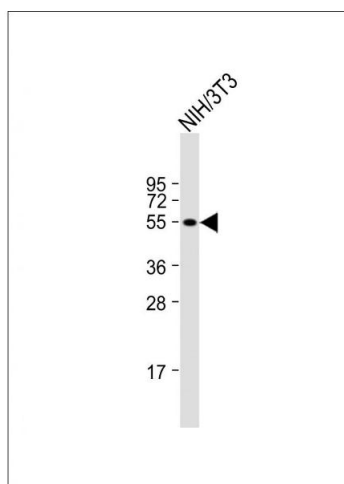
Preservative: Sodium azide

Precaution of Use: This product contains Sodium azide: a POISONOUS AND HAZARDOUS SUBSTANCE which should be handled by trained staff only.

Storage: 4 °C,-20 °C

Expiry Date: 6 months

## Images



### Western Blotting

**Image 1.** Anti-PDE1A Antibody (N-Term) at 1:2000 dilution + NIH/3T3 whole cell lysate Lysates/proteins at 20 µg per lane. Secondary Goat Anti-Rabbit IgG, (H+L), Peroxidase conjugated at 1/10000 dilution. Predicted band size : 61 kDa Blocking/Dilution buffer: 5 % NFDM/TBST.