

Datasheet for ABIN6243564
anti-DECR1 antibody (AA 241-274)[Go to Product page](#)

1 Image

Overview

Quantity:	400 µL
Target:	DECR1
Binding Specificity:	AA 241-274
Reactivity:	Human, Mouse, Rat
Host:	Rabbit
Clonality:	Polyclonal
Conjugate:	This DECR1 antibody is un-conjugated
Application:	Western Blotting (WB)

Product Details

Immunogen:	This DECR1 antibody is generated from a rabbit immunized with a KLH conjugated synthetic peptide between 241-274 amino acids from the Central region of human DECR1.
Clone:	RB49273
Isotype:	Ig Fraction
Purification:	This antibody is purified through a protein A column, followed by peptide affinity purification.

Target Details

Target:	DECR1
Alternative Name:	DECR1 (DECR1 Products)
Background:	Auxiliary enzyme of beta-oxidation. It participates in the metabolism of unsaturated fatty enoyl-

Target Details

CoA esters having double bonds in both even- and odd-numbered positions. Catalyzes the NADP-dependent reduction of 2,4-dienoyl-CoA to yield trans-3- enoyl-CoA.

Molecular Weight: 36068

UniProt: [Q16698](#)

Pathways: [Monocarboxylic Acid Catabolic Process](#)

Application Details

Application Notes: WB: 1:1000

Restrictions: For Research Use only

Handling

Format: Liquid

Buffer: Purified polyclonal antibody supplied in PBS with 0.09 % (W/V) sodium azide.

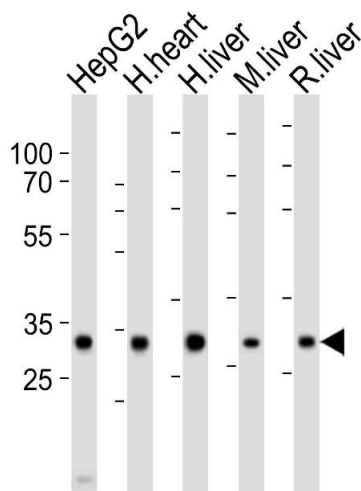
Preservative: Sodium azide

Precaution of Use: This product contains Sodium azide: a POISONOUS AND HAZARDOUS SUBSTANCE which should be handled by trained staff only.

Storage: 4 °C,-20 °C

Expiry Date: 6 months

Images



Western Blotting

Image 1. Western blot analysis of lysates from HepG2 cell line, human heart, human liver, mouse liver, rat liver tissue lysate (from left to right), using DECR1 Antibody (Center) (ABIN6243564 and ABIN6577825). (ABIN6243564 and ABIN6577825) was diluted at 1:1000 at each lane. A goat anti-rabbit IgG H&L(HRP) at 1:10000 dilution was used as the secondary antibody. Lysates at 20 µg per lane.