



Datasheet for ABIN6243588
anti-ASB15 antibody (AA 258-287)



[Go to Product page](#)

1 Image

Overview

Quantity:	400 µL
Target:	ASB15
Binding Specificity:	AA 258-287
Reactivity:	Human, Mouse
Host:	Rabbit
Clonality:	Polyclonal
Conjugate:	This ASB15 antibody is un-conjugated
Application:	Western Blotting (WB)

Product Details

Immunogen:	This ASB15 antibody is generated from rabbits immunized with a KLH conjugated synthetic peptide between 258-287 amino acids from the Central region of human ASB15.
Clone:	RB25809
Isotype:	Ig Fraction
Predicted Reactivity:	B
Purification:	This antibody is purified through a protein A column, followed by peptide affinity purification.

Target Details

Target:	ASB15
Alternative Name:	ASB15 (ASB15 Products)

Target Details

Background:	ASB15 may be a substrate-recognition component of a SCF-like ECS (Elongin-Cullin-SOCS-box protein) E3 ubiquitin-protein ligase complex which mediates the ubiquitination and subsequent proteasomal degradation of target proteins.
Molecular Weight:	65799
NCBI Accession:	NP_563616
UniProt:	Q8WXX1

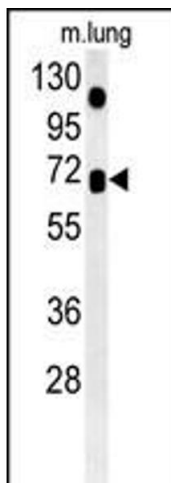
Application Details

Application Notes:	WB: 1:1000
Restrictions:	For Research Use only

Handling

Format:	Liquid
Buffer:	Purified polyclonal antibody supplied in PBS with 0.09 % (W/V) sodium azide.
Preservative:	Sodium azide
Precaution of Use:	This product contains Sodium azide: a POISONOUS AND HAZARDOUS SUBSTANCE which should be handled by trained staff only.
Storage:	4 °C,-20 °C
Expiry Date:	6 months

Images



Western Blotting

Image 1. ASB15 Antibody (Center) (ABIN6243588 and ABIN6578965) western blot analysis in mouse lung tissue lysates (35 µg/lane). This demonstrates the ASB15 antibody detected ASB15 protein (arrow).