



Datasheet for ABIN6243589  
**anti-AGBL2 antibody (AA 92-126)**



[Go to Product page](#)

1 Image

Overview

Quantity:	400 µL
Target:	AGBL2
Binding Specificity:	AA 92-126
Reactivity:	Zebrafish (Danio rerio)
Host:	Rabbit
Clonality:	Polyclonal
Conjugate:	This AGBL2 antibody is un-conjugated
Application:	Western Blotting (WB)

Product Details

Immunogen:	This (DANRE) zte25 antibody is generated from a rabbit immunized with a KLH conjugated synthetic peptide between 92-126 amino acids of DANRE zte25.
Clone:	RB47039
Isotype:	IgG
Purification:	This antibody is purified through a protein A column, followed by peptide affinity purification.

Target Details

Target:	AGBL2
Alternative Name:	zte25 ( <a href="#">AGBL2 Products</a> )
Background:	Metalloprotease involved in the dephosphorylation of alpha-tubulin C-terminus (By

## Target Details

similarity).

Molecular Weight: 82236

UniProt: [A6H8T7](#)

## Application Details

Application Notes: WB: 1:1000

Restrictions: For Research Use only

## Handling

Format: Liquid

Buffer: Purified polyclonal antibody supplied in PBS with 0.09 % (W/V) sodium azide.

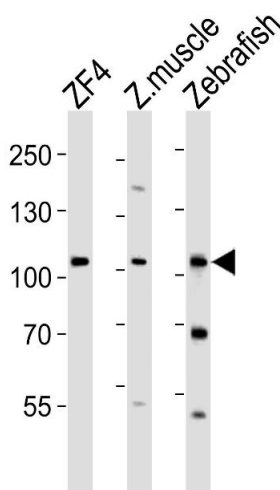
Preservative: Sodium azide

Precaution of Use: This product contains Sodium azide: a POISONOUS AND HAZARDOUS SUBSTANCE which should be handled by trained staff only.

Storage: 4 °C,-20 °C

Expiry Date: 6 months

## Images



### Western Blotting

**Image 1.** Western blot analysis of lysates from ZF4 cell line, zebra fish muscle, Zebrafish tissue lysate (from left to right), using (DANRE) zte25 Antibody (N-term) Azb18715a. Azb18715a was diluted at 1:1000 at each lane. A goat anti-rabbit IgG H&L(HRP) at 1:10000 dilution was used as the secondary antibody. Lysates at 35 µg per lane.