

Datasheet for ABIN6243593
anti-PSMA6 antibody (AA 32-65)[Go to Product page](#)

1 Image

Overview

Quantity:	200 µL
Target:	PSMA6
Binding Specificity:	AA 32-65
Reactivity:	Human, Mouse, Rat
Host:	Rabbit
Clonality:	Polyclonal
Conjugate:	This PSMA6 antibody is un-conjugated
Application:	Western Blotting (WB)

Product Details

Immunogen:	This PSMA6 antibody is generated from a rabbit immunized with a KLH conjugated synthetic peptide between 32-65 amino acids from human PSMA6.
Clone:	RB53126
Isotype:	Ig Fraction
Purification:	This antibody is purified through a protein A column, followed by peptide affinity purification.

Target Details

Target:	PSMA6
Alternative Name:	PSMA6 (PSMA6 Products)
Background:	The proteasome is a multicatalytic proteinase complex which is characterized by its ability to

Target Details

	cleave peptides with Arg, Phe, Tyr, Leu, and Glu adjacent to the leaving group at neutral or slightly basic pH . The proteasome has an ATP-dependent proteolytic activity.
Molecular Weight:	27399
UniProt:	P60900
Pathways:	Mitotic G1-G1/S Phases , DNA Replication , Synthesis of DNA

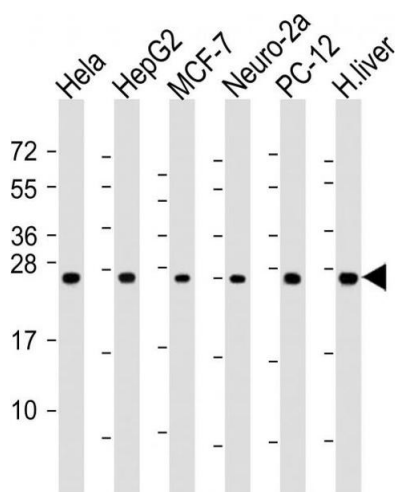
Application Details

Application Notes:	WB: 1:2000
Restrictions:	For Research Use only

Handling

Format:	Liquid
Buffer:	Purified polyclonal antibody supplied in PBS with 0.09 % (W/V) sodium azide.
Preservative:	Sodium azide
Precaution of Use:	This product contains Sodium azide: a POISONOUS AND HAZARDOUS SUBSTANCE which should be handled by trained staff only.
Storage:	4 °C,-20 °C
Expiry Date:	6 months

Images



Western Blotting

Image 1. All lanes : Anti-PS Antibody (N-Term) at 1:2000 dilution Lane 1: HeLa whole cell lysate Lane 2: HepG2 whole cell lysate Lane 3: MCF-7 whole cell lysate Lane 4: Neuro-2a whole cell lysate Lane 5: PC-12 whole cell lysate Lane 6: human liver lysate Lysates/proteins at 20 µg per lane. Secondary Goat Anti-Rabbit IgG, (H+L), Peroxidase conjugated at 1/10000 dilution. Predicted band size : 27 kDa Blocking/Dilution buffer: 5 % NFDM/TBST.