

Datasheet for ABIN6243608  
**anti-CXCR2 antibody (N-Term)**



[Go to Product page](#)

1 Image

## Overview

Quantity:	400 µL
Target:	CXCR2
Binding Specificity:	AA 7-38, N-Term
Reactivity:	Human
Host:	Rabbit
Clonality:	Polyclonal
Conjugate:	This CXCR2 antibody is un-conjugated
Application:	Western Blotting (WB)

## Product Details

Immunogen:	This IL8RB antibody is generated from a rabbit immunized with a KLH conjugated synthetic peptide between 7-38 amino acids from the N-terminal region of human IL8RB.
Clone:	RB44322
Isotype:	Ig Fraction
Purification:	This antibody is purified through a protein A column, followed by peptide affinity purification.

## Target Details

Target:	CXCR2
Alternative Name:	IL8RB ( <a href="#">CXCR2 Products</a> )
Background:	Receptor for interleukin-8 which is a powerful neutrophil chemotactic factor. Binding of IL-8 to

## Target Details

the receptor causes activation of neutrophils. This response is mediated via a G-protein that activates a phosphatidylinositol-calcium second messenger system. Binds to IL-8 with high affinity. Also binds with high affinity to CXCL3, GRO/MGSA and NAP-2.

Molecular Weight: 40759

UniProt: [P25025](#)

Pathways: [cAMP Metabolic Process](#)

## Application Details

Application Notes: WB: 1:1000

Restrictions: For Research Use only

## Handling

Format: Liquid

Buffer: Purified polyclonal antibody supplied in PBS with 0.09 % (W/V) sodium azide.

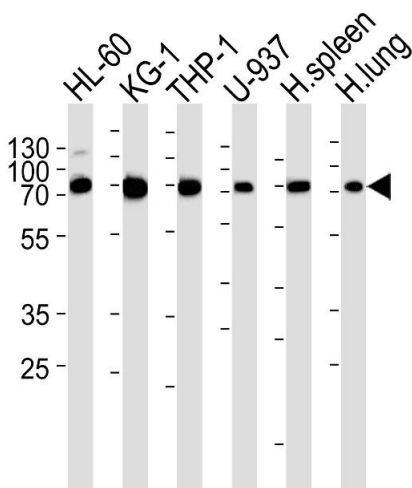
Preservative: Sodium azide

Precaution of Use: This product contains Sodium azide: a POISONOUS AND HAZARDOUS SUBSTANCE which should be handled by trained staff only.

Storage: 4 °C,-20 °C

Expiry Date: 6 months

## Images



### Western Blotting

**Image 1.** Western blot analysis of lysates from HL-60, KG-1, THP-1, U-937 cell line, human spleen and lung tissue lysate (from left to right), using IL8RB Antibody (N-term) (ABIN6243608 and ABIN6577433). (ABIN6243608 and ABIN6577433) was diluted at 1:1000 at each lane. A goat anti-rabbit IgG H&L(HRP) at 1:5000 dilution was used as the secondary antibody. Lysates at 35 µg per lane.