

Datasheet for ABIN6243613
anti-GRF2 antibody (AA 536-569)[Go to Product page](#)

2 Images

Overview

Quantity:	400 µL
Target:	GRF2 (RAPGEF1)
Binding Specificity:	AA 536-569
Reactivity:	Human
Host:	Rabbit
Clonality:	Polyclonal
Application:	Western Blotting (WB)

Product Details

Immunogen:	This RAPGEF1 antibody is generated from a rabbit immunized with a KLH conjugated synthetic peptide between 536-569 amino acids from the Central region of human RAPGEF1.
Clone:	RB52924
Isotype:	Ig Fraction
Purification:	This antibody is purified through a protein A column, followed by peptide affinity purification.

Target Details

Target:	GRF2 (RAPGEF1)
Alternative Name:	RAPGEF1 (RAPGEF1 Products)
Background:	Guanine nucleotide-releasing protein that binds to SH3 domain of CRK and GRB2/ASH. Transduces signals from CRK to activate RAS. Plays a role in the establishment of basal endothelial barrier function. Plays a role in nerve growth factor (NGF)-induced sustained

Target Details

	activation of Rap1 and neurite outgrowth.
Molecular Weight:	120548
UniProt:	Q13905
Pathways:	Interferon-gamma Pathway , Neurotrophin Signaling Pathway , Platelet-derived growth Factor Receptor Signaling , Signaling of Hepatocyte Growth Factor Receptor

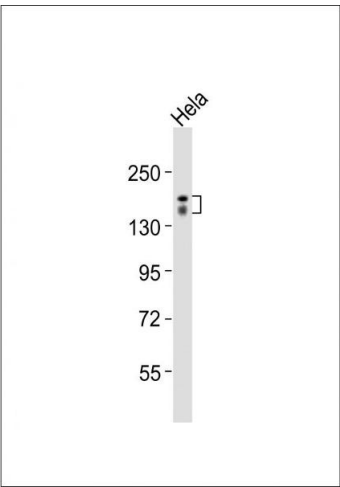
Application Details

Application Notes:	WB: 1:1000-1:2000. WB: 1:2000
Restrictions:	For Research Use only

Handling

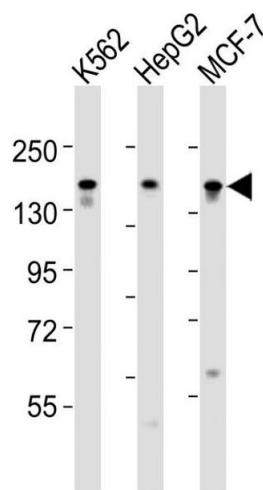
Format:	Liquid
Buffer:	Purified polyclonal antibody supplied in PBS with 0.09 % (W/V) sodium azide.
Preservative:	Sodium azide
Precaution of Use:	This product contains Sodium azide: a POISONOUS AND HAZARDOUS SUBSTANCE which should be handled by trained staff only.
Storage:	4 °C,-20 °C
Expiry Date:	6 months

Images



Western Blotting

Image 1. Anti-RGEF1 Antibody (Center) at 1:2000 dilution + HeLa whole cell lysates. Lysates/proteins at 20 µg per lane. Secondary: Goat Anti-Rabbit IgG, (H+L), Peroxidase conjugated at 1/10000 dilution. Predicted band size: 121 kDa. Blocking/Dilution buffer: 5 % NFDm/TBST.



Western Blotting

Image 2. All lanes : Anti-RGEF1 Antibody (Center) at 1:1000-1:2000 dilution Lane 1: K562 whole cell lysates Lane 2: HepG2 whole cell lysates Lane 3: MCF-7 whole cell lysates Lysates/proteins at 20 µg per lane. Secondary Goat Anti-Rabbit IgG, (H+L), Peroxidase conjugated at 1/10000 dilution Predicted band size : 121 kDa Blocking/Dilution buffer: 5 % NFDM/TBST.