

Datasheet for ABIN6243628  
**anti-CHST1 antibody (AA 341-375)**[Go to Product page](#)

## 1 Image

## Overview

Quantity:	400 µL
Target:	CHST1
Binding Specificity:	AA 341-375
Reactivity:	Zebrafish (Danio rerio)
Host:	Rabbit
Clonality:	Polyclonal
Conjugate:	This CHST1 antibody is un-conjugated
Application:	Western Blotting (WB)

## Product Details

Immunogen:	This (DANRE) chst1 antibody is generated from a rabbit immunized with a KLH conjugated synthetic peptide between 341-375 amino acids of DANRE chst1.
Clone:	RB47041
Isotype:	IgG
Purification:	This antibody is purified through a protein A column, followed by peptide affinity purification.

## Target Details

Target:	CHST1
Alternative Name:	chst1 ( <a href="#">CHST1 Products</a> )
Background:	Sulfotransferase that utilizes 3'-phospho-5'-adenylyl sulfate (PAPS) as sulfonate donor to

## Target Details

	catalyze the transfer of sulfate to position 6 of galactose (Gal) residues of keratan (By similarity).
Molecular Weight:	48212
UniProt:	<a href="#">Q6DBY9</a>
Pathways:	<a href="#">Glycosaminoglycan Metabolic Process</a>

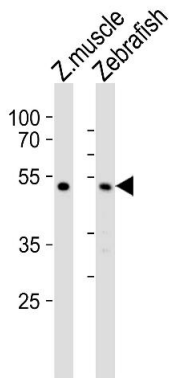
## Application Details

Application Notes:	WB: 1:1000
Restrictions:	For Research Use only

## Handling

Format:	Liquid
Buffer:	Purified polyclonal antibody supplied in PBS with 0.09 % (W/V) sodium azide.
Preservative:	Sodium azide
Precaution of Use:	This product contains Sodium azide: a POISONOUS AND HAZARDOUS SUBSTANCE which should be handled by trained staff only.
Storage:	4 °C,-20 °C
Expiry Date:	6 months

## Images



### Western Blotting

**Image 1.** Western blot analysis of lysates from zebra fish muscle, Zebrafish tissue lysate (from left to right), using (DANRE) chst1 Antibody (C-term) Azb18710c. Azb18710c was diluted at 1:1000 at each lane. A goat anti-rabbit IgG H&L(HRP) at 1:5000 dilution was used as the secondary antibody. Lysates at 35 µg per lane.