

Datasheet for ABIN6243632  
**anti-COX6B1 antibody (N-Term)**[Go to Product page](#)

## 2 Images

## Overview

Quantity:	400 µL
Target:	COX6B1
Binding Specificity:	AA 8-22, N-Term
Reactivity:	Human
Host:	Rabbit
Clonality:	Polyclonal
Conjugate:	This COX6B1 antibody is un-conjugated
Application:	Western Blotting (WB), Immunofluorescence (IF)

## Product Details

Immunogen:	This COX6B1 antibody is generated from a rabbit immunized with a KLH conjugated synthetic peptide between 8-22 amino acids from the N-terminal region of human COX6B1.
Clone:	RB48530
Isotype:	Ig Fraction
Predicted Reactivity:	M
Purification:	This antibody is purified through a protein A column, followed by peptide affinity purification.

## Target Details

Target:	COX6B1
Alternative Name:	COX6B1 ( <a href="#">COX6B1 Products</a> )

## Target Details

Background:	Connects the two COX monomers into the physiological dimeric form (By similarity).
Molecular Weight:	10192
UniProt:	<a href="#">P14854</a>

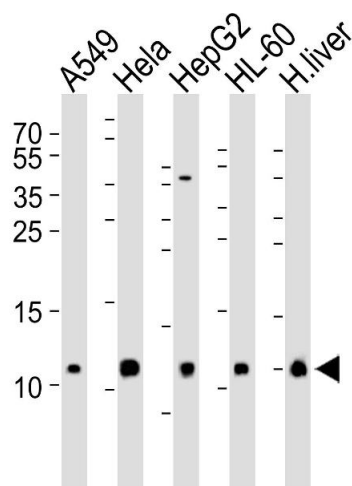
## Application Details

Application Notes:	IF: 1:25. WB: 1:1000
Restrictions:	For Research Use only

## Handling

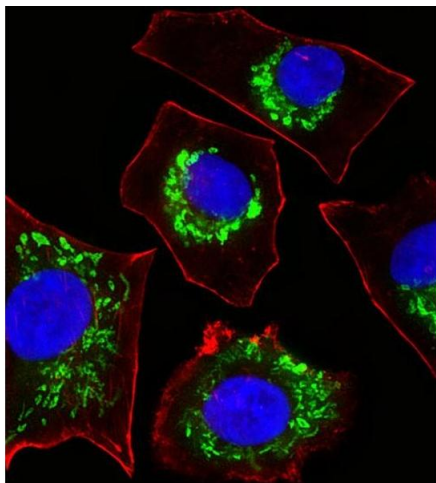
Format:	Liquid
Buffer:	Purified polyclonal antibody supplied in PBS with 0.09 % (W/V) sodium azide.
Preservative:	Sodium azide
Precaution of Use:	This product contains Sodium azide: a POISONOUS AND HAZARDOUS SUBSTANCE which should be handled by trained staff only.
Storage:	4 °C,-20 °C
Expiry Date:	6 months

## Images



### Western Blotting

**Image 1.** Western blot analysis of lysates from A549, HeLa, HepG2, HL-60 cell line and human liver tissue lysate (from left to right), using COX6B1 Antibody (N-term) (ABIN6243632 and ABIN6577406). (ABIN6243632 and ABIN6577406) was diluted at 1:1000 at each lane. A goat anti-rabbit IgG H&L(HRP) at 1:5000 dilution was used as the secondary antibody. Lysates at 35 µg per lane.



### Immunofluorescence

**Image 2.** Fluorescent image of A549 cells stained with COX6B1 Antibody (N-term) (ABIN6243632 and ABIN6577406). (ABIN6243632 and ABIN6577406) was diluted at 1:25 dilution. An Alexa Fluor 488-conjugated goat anti-rabbit IgG at 1:400 dilution was used as the secondary antibody (green). DAPI was used to stain the cell nuclear (blue). Cytoplasmic actin was counterstained with Alexa Fluor® 555 conjugated with Phalloidin (red).