

Datasheet for ABIN6243637
anti-CCDC16 antibody (AA 173-207)[Go to Product page](#)

1 Image

Overview

Quantity:	400 µL
Target:	CCDC16 (ZNF830)
Binding Specificity:	AA 173-207
Reactivity:	Human
Host:	Rabbit
Clonality:	Polyclonal
Conjugate:	This CCDC16 antibody is un-conjugated
Application:	Western Blotting (WB)

Product Details

Immunogen:	This ZNF830 antibody is generated from a rabbit immunized with a KLH conjugated synthetic peptide between 173-207 amino acids from the Central region of human ZNF830.
Clone:	RB49568
Isotype:	Ig Fraction
Purification:	This antibody is purified through a protein A column, followed by peptide affinity purification.

Target Details

Target:	CCDC16 (ZNF830)
Alternative Name:	ZNF830 (ZNF830 Products)
Background:	May act as a regulator of the cell cycle in embryos by participating in control of M phase (By

Target Details

similarity).

Molecular Weight: 41999

UniProt: [Q96NB3](#)

Application Details

Application Notes: WB: 1:1000

Restrictions: For Research Use only

Handling

Format: Liquid

Buffer: Purified polyclonal antibody supplied in PBS with 0.09 % (W/V) sodium azide.

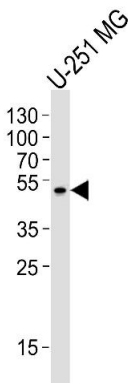
Preservative: Sodium azide

Precaution of Use: This product contains Sodium azide: a POISONOUS AND HAZARDOUS SUBSTANCE which should be handled by trained staff only.

Storage: 4 °C,-20 °C

Expiry Date: 6 months

Images



Western Blotting

Image 1. Western blot analysis of lysate from U-251 MG cell line, using ZN Antibody (Center) (ABIN6243637 and ABIN6577459). (ABIN6243637 and ABIN6577459) was diluted at 1:1000. A goat anti-rabbit IgG H&L(HRP) at 1:5000 dilution was used as the secondary antibody. Lysate at 35 µg.