

Datasheet for ABIN6243638
anti-SDHB antibody (AA 147-182)[Go to Product page](#)

2 Images

Overview

Quantity:	400 µL
Target:	SDHB
Binding Specificity:	AA 147-182
Reactivity:	Mouse, Rat, Zebrafish (Danio rerio)
Host:	Rabbit
Clonality:	Polyclonal
Conjugate:	This SDHB antibody is un-conjugated
Application:	Western Blotting (WB)

Product Details

Immunogen:	This (DANRE) sdhb antibody is generated from a rabbit immunized with a KLH conjugated synthetic peptide between 147-182 amino acids from the region of (DANRE) sdhb.
Clone:	RB45552
Isotype:	Ig Fraction
Predicted Reactivity:	B, C, H, Pig
Purification:	This antibody is purified through a protein A column, followed by peptide affinity purification.

Target Details

Target:	SDHB
Alternative Name:	sdhb (SDHB Products)

Target Details

Background:	Iron-sulfur protein (IP) subunit of succinate dehydrogenase (SDH) that is involved in complex II of the mitochondrial electron transport chain and is responsible for transferring electrons from succinate to ubiquinone (coenzyme Q) (By similarity).
Molecular Weight:	31740
UniProt:	A5PL98

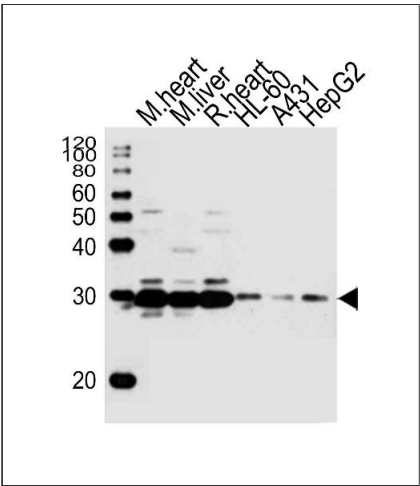
Application Details

Application Notes:	WB: 1:1000. WB: 1:1000
Restrictions:	For Research Use only

Handling

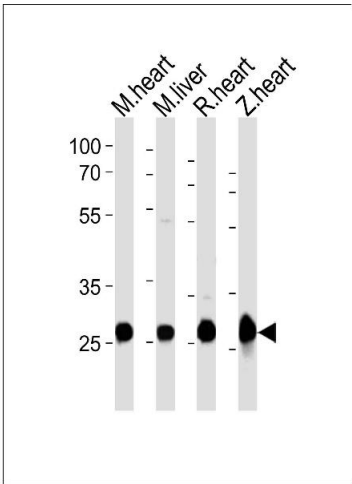
Format:	Liquid
Buffer:	Purified polyclonal antibody supplied in PBS with 0.09 % (W/V) sodium azide.
Preservative:	Sodium azide
Precaution of Use:	This product contains Sodium azide: a POISONOUS AND HAZARDOUS SUBSTANCE which should be handled by trained staff only.
Storage:	4 °C,-20 °C
Expiry Date:	6 months

Images



Western Blotting

Image 1. Western blot analysis of lysates from mouse heart, mouse liver, rat heart tissue, HL-60, A431, HepG2 cell line (from left to right), using (DANRE) sdhb Antibody Azb18722a. Azb18722a was diluted at 1:1000 at each lane. A goat anti-rabbit IgG H&L(HRP) at 1:10000 dilution was used as the secondary antibody.



Western Blotting

Image 2. Western blot analysis of lysates from mouse heart, mouse liver, rat heart, zebra fish heart tissue lysate (from left to right), using (DANRE) sdhb Antibody Azb18722a. Azb18722a was diluted at 1:1000 at each lane. A goat anti-rabbit IgG H&L(HRP) at 1:10000 dilution was used as the secondary antibody.