

Datasheet for ABIN6243656
anti-FEM1B antibody (AA 547-579)[Go to Product page](#)

1 Image

Overview

Quantity:	50 µL
Target:	FEM1B
Binding Specificity:	AA 547-579
Reactivity:	Human, Rat, Mouse
Host:	Rabbit
Clonality:	Polyclonal
Conjugate:	This FEM1B antibody is un-conjugated
Application:	Western Blotting (WB)

Product Details

Immunogen:	This FEM1B antibody is generated from a rabbit immunized with a KLH conjugated synthetic peptide between 547-579 amino acids from human FEM1B.
Clone:	RB54743
Isotype:	Ig Fraction
Predicted Reactivity:	M, Rat
Purification:	This antibody is purified through a protein A column, followed by peptide affinity purification.

Target Details

Target:	FEM1B
Alternative Name:	FEM1B (FEM1B Products)

Target Details

Background:	Component of an E3 ubiquitin-protein ligase complex, in which it may act as a substrate recognition subunit. Involved in apoptosis by acting as a death receptor-associated protein that mediates apoptosis. Also involved in glucose homeostasis in pancreatic islet. Functions as an adapter/mediator in replication stress-induced signaling that leads to the activation of CHEK1.
Molecular Weight:	70264
UniProt:	Q9UK73

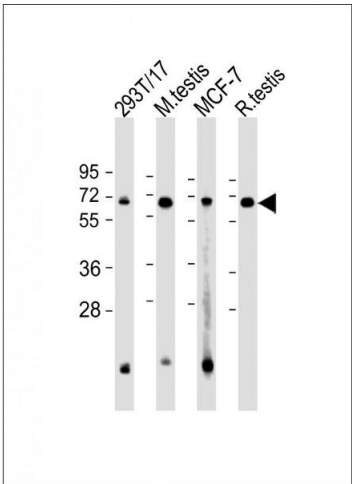
Application Details

Application Notes:	WB: 1:2000
Restrictions:	For Research Use only

Handling

Format:	Liquid
Buffer:	Purified polyclonal antibody supplied in PBS with 0.09 % (W/V) sodium azide.
Preservative:	Sodium azide
Precaution of Use:	This product contains Sodium azide: a POISONOUS AND HAZARDOUS SUBSTANCE which should be handled by trained staff only.
Storage:	4 °C,-20 °C
Expiry Date:	6 months

Images



Western Blotting

Image 1. All lanes : Anti-FEM1B Antibody (C-Term) at 1:2000 dilution Lane 1: 293T/17 whole cell lysate Lane 2: mouse testis lysate Lane 3: MCF-7 whole cell lysate Lane 4: rat testis lysate Lysates/proteins at 20 µg per lane. Secondary Goat Anti-Rabbit IgG, (H+L), Peroxidase conjugated at 1/10000 dilution. Predicted band size : 70 kDa Blocking/Dilution buffer: 5 % NFDm/TBST.