

Datasheet for ABIN6243662
anti-Fission 1 antibody (N-Term)

2 Images

[Go to Product page](#)

Overview

Quantity:	400 µL
Target:	Fission 1 (FIS1)
Binding Specificity:	AA 6-40, N-Term
Reactivity:	Human, Mouse, Rat
Host:	Rabbit
Clonality:	Polyclonal
Conjugate:	This Fission 1 antibody is un-conjugated
Application:	Western Blotting (WB)

Product Details

Immunogen:	This FIS1 antibody is generated from a rabbit immunized with a KLH conjugated synthetic peptide between 6-40 amino acids from the N-terminal region of human FIS1.
Clone:	RB50047
Isotype:	Ig Fraction
Purification:	This antibody is purified through a protein A column, followed by peptide affinity purification.

Target Details

Target:	Fission 1 (FIS1)
Alternative Name:	FIS1 (FIS1 Products)
Background:	Involved in the fragmentation of the mitochondrial network and its perinuclear clustering. Plays

Target Details

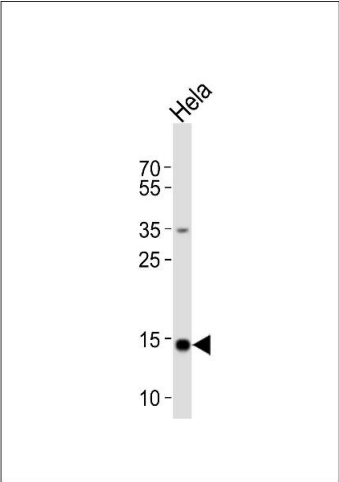
	a minor role in the recruitment and association of the fission mediator dynamin- related protein 1 (DNM1L) to the mitochondrial surface and mitochondrial fission. Can induce cytochrome c release from the mitochondrion to the cytosol, ultimately leading to apoptosis. Also mediates peroxisomal fission.
Molecular Weight:	16938
UniProt:	Q9Y3D6
Pathways:	Positive Regulation of Endopeptidase Activity

Application Details

Application Notes:	WB: 1:1000. WB: 1:1000
Restrictions:	For Research Use only

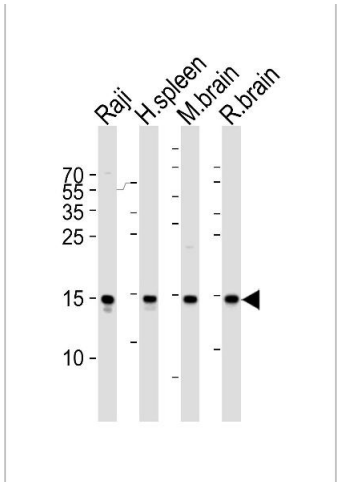
Handling

Format:	Liquid
Buffer:	Purified polyclonal antibody supplied in PBS with 0.09 % (W/V) sodium azide.
Preservative:	Sodium azide
Precaution of Use:	This product contains Sodium azide: a POISONOUS AND HAZARDOUS SUBSTANCE which should be handled by trained staff only.
Storage:	4 °C,-20 °C
Expiry Date:	6 months



Western Blotting

Image 1. Western blot analysis of lysate from Hela cell line, using FIS1 Antibody (N-term) (ABIN6243662 and ABIN6577460). (ABIN6243662 and ABIN6577460) was diluted at 1:1000. A goat anti-rabbit IgG H&L(HRP) at 1:10000 dilution was used as the secondary antibody. Lysate at 20 µg.



Western Blotting

Image 2. Western blot analysis of lysates from Raji cell line, human spleen, mouse brain and rat brain tissue lysate(from left to right), using FIS1 Antibody (N-term) (ABIN6243662 and ABIN6577460). (ABIN6243662 and ABIN6577460) was diluted at 1:1000 at each lane. A goat anti-rabbit IgG H&L(HRP) at 1:5000 dilution was used as the secondary antibody. Lysates at 35 µg per lane.