



[Go to Product page](#)

Datasheet for ABIN6243671
anti-GCKR antibody (AA 40-72)

1 Image

Overview

Quantity:	200 µL
Target:	GCKR
Binding Specificity:	AA 40-72
Reactivity:	Human
Host:	Rabbit
Clonality:	Polyclonal
Conjugate:	This GCKR antibody is un-conjugated
Application:	Western Blotting (WB)

Product Details

Immunogen:	This GCKR antibody is generated from a rabbit immunized with a KLH conjugated synthetic peptide between 40-72 amino acids from human GCKR.
Clone:	RB53114
Isotype:	Ig Fraction
Purification:	This antibody is purified through a protein A column, followed by peptide affinity purification.

Target Details

Target:	GCKR
Alternative Name:	GCKR (GCKR Products)
Background:	Inhibits glucokinase (GCK) by forming an inactive complex with this enzyme. The affinity of

Target Details

GCKR for GCK is modulated by fructose metabolites: GCKR with bound fructose 6- phosphate has increased affinity for GCK, while GCKR with bound fructose 1-phosphate has strongly decreased affinity for GCK and does not inhibit GCK activity.

Molecular Weight: 68685

UniProt: [Q14397](#)

Pathways: [Carbohydrate Homeostasis](#), [Regulation of Carbohydrate Metabolic Process](#), [Protein targeting to Nucleus](#)

Application Details

Application Notes: WB: 1:2000

Restrictions: For Research Use only

Handling

Format: Liquid

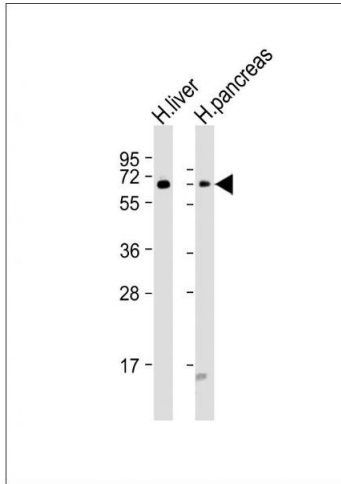
Buffer: Purified polyclonal antibody supplied in PBS with 0.09 % (W/V) sodium azide.

Preservative: Sodium azide

Precaution of Use: This product contains Sodium azide: a POISONOUS AND HAZARDOUS SUBSTANCE which should be handled by trained staff only.

Storage: 4 °C,-20 °C

Expiry Date: 6 months



Western Blotting

Image 1. All lanes : Anti-GCKR Antibody (N-Term) at 1:2000 dilution Lane 1: human liver lysates Lane 2: human pancreas lysates Lysates/proteins at 20 µg per lane. Secondary Goat Anti-Rabbit IgG, (H+L), Peroxidase conjugated at 1/10000 dilution. Predicted band size : 69 kDa Blocking/Dilution buffer: 5 % NFDN/TBST.