

Datasheet for ABIN6243675
anti-GLI2 antibody (C-Term)[Go to Product page](#)

6 Images

Overview

Quantity:	400 µL
Target:	GLI2
Binding Specificity:	AA 1287-1321, C-Term
Reactivity:	Human
Host:	Rabbit
Clonality:	Polyclonal
Conjugate:	This GLI2 antibody is un-conjugated
Application:	Western Blotting (WB), Immunohistochemistry (Paraffin-embedded Sections) (IHC (p)), Immunofluorescence (IF), Flow Cytometry (FACS)

Product Details

Immunogen:	This GLI2 antibody is generated from a rabbit immunized with a KLH conjugated synthetic peptide between 1287-1321 amino acids from the C-terminal region of human GLI2.
Clone:	RB49147
Isotype:	Ig Fraction
Purification:	This antibody is purified through a protein A column, followed by peptide affinity purification.

Target Details

Target:	GLI2
Alternative Name:	GLI2 (GLI2 Products)

Target Details

Background: Acts as a transcriptional activator. May play a role during embryogenesis. Binds to the DNA sequence 5'-GAACCACCCA-3' which is part of the TRE-2S regulatory element that augments the Tax-dependent enhancer of human T-cell leukemia virus type 1. Is involved in the smoothened (SHH) signaling pathway.

Molecular Weight: 167783

UniProt: [P10070](#)

Pathways: [Hedgehog Signaling](#), [Dopaminergic Neurogenesis](#)

Application Details

Application Notes: IF: 1:25. WB: 1:2000. WB: 1:1000. IHC-P-Leica: 1:500. IHC-P-Leica: 1:500. FC: 1:25

Restrictions: For Research Use only

Handling

Format: Liquid

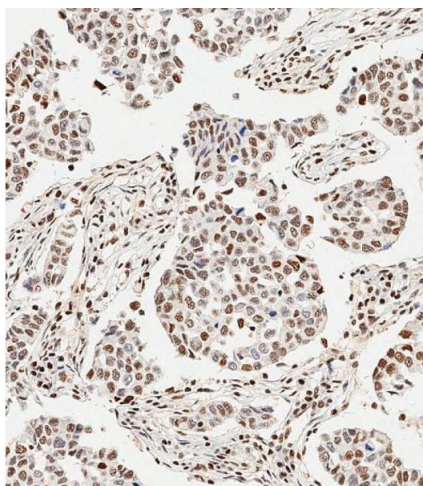
Buffer: Purified polyclonal antibody supplied in PBS with 0.09 % (W/V) sodium azide.

Preservative: Sodium azide

Precaution of Use: This product contains Sodium azide: a POISONOUS AND HAZARDOUS SUBSTANCE which should be handled by trained staff only.

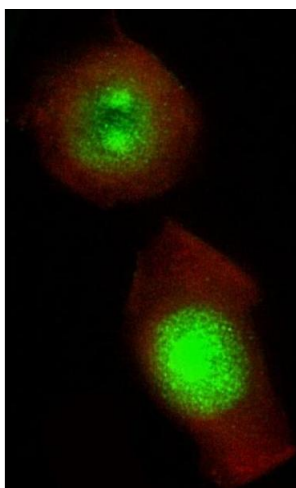
Storage: 4 °C, -20 °C

Expiry Date: 6 months



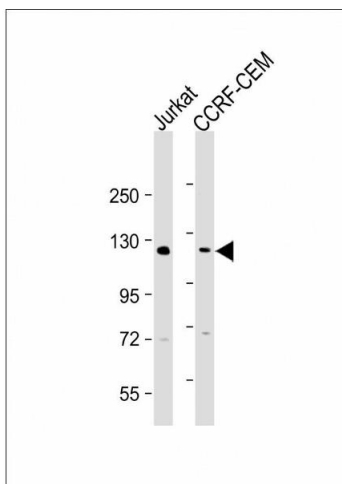
Immunohistochemistry (Paraffin-embedded Sections)

Image 1. Immunohistochemical analysis of paraffin-embedded Human breast carcinoma tissue using (ABIN6243675 and ABIN6577401) performed on the Leica® BOND RXm. Tissue was fixed with formaldehyde at room temperature, antigen retrieval was by heat mediation with a EDTA buffer (pH 9.0). Samples were incubated with primary Antibody (1:500) for 1 hours at room temperature. A undiluted biotinylated CRF Anti-Polyvalent HRP Polymer antibody was used as the secondary antibody.



Immunofluorescence

Image 2. Immunofluorescent analysis of 4 % paraformaldehyde-fixed, 0.1 % Triton X-100 permeabilized PC-3 cells labeling GLI2 with (ABIN6243675 and ABIN6577401) at 1/25 dilution, followed by Dylight® 488-conjugated goat anti-Rabbit IgG secondary antibody at 1/200 dilution (green). Immunofluorescence image showing Nucleus and Weak Cytoplasm staining on PC-3 cell line. Cytoplasmic actin is detected with Dylight® 554 Phalloidin(red). The nuclear counter stain is DAPI (blue).



Western Blotting

Image 3. All lanes : Anti-GLI2 Antibody (C-term) at 1:2000 dilution Lane 1: Jurkat whole cell lysate Lane 2: CCRF-CEM whole cell lysate Lysates/proteins at 20 µg per lane. Secondary Goat Anti-Rabbit IgG, (H+L), Peroxidase conjugated at 1/10000 dilution. Predicted band size : 168 kDa Blocking/Dilution buffer: 5 % NFDM/TBST.

Please check the [product details page](#) for more images. Overall 6 images are available for ABIN6243675.