

Datasheet for ABIN6243679
anti-GPSM2 antibody (AA 113-143)[Go to Product page](#)

1 Image

Overview

Quantity:	200 µL
Target:	GPSM2
Binding Specificity:	AA 113-143
Reactivity:	Human
Host:	Rabbit
Clonality:	Polyclonal
Conjugate:	This GPSM2 antibody is un-conjugated
Application:	Western Blotting (WB)

Product Details

Immunogen:	This GPSM2 antibody is generated from a rabbit immunized with a KLH conjugated synthetic peptide between 113-143 amino acids from human GPSM2.
Clone:	RB54066
Isotype:	Ig Fraction
Predicted Reactivity:	M
Purification:	This antibody is purified through a protein A column, followed by peptide affinity purification.

Target Details

Target:	GPSM2
Alternative Name:	GPSM2 (GPSM2 Products)

Target Details

Background:	Plays an important role in spindle pole orientation. Interacts and contributes to the functional activity of G(i) alpha proteins. Acts to stabilize the apical complex during neuroblast divisions.
Molecular Weight:	76662
UniProt:	P81274
Pathways:	Regulation of G-Protein Coupled Receptor Protein Signaling

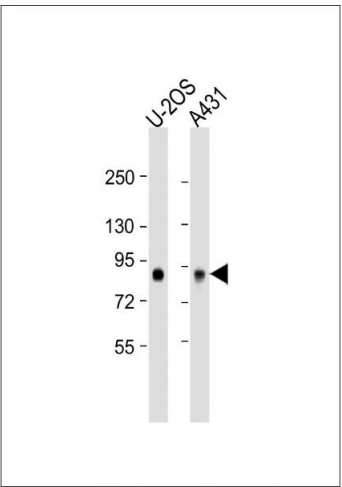
Application Details

Application Notes:	WB: 1:2000
Restrictions:	For Research Use only

Handling

Format:	Liquid
Buffer:	Purified polyclonal antibody supplied in PBS with 0.09 % (W/V) sodium azide.
Preservative:	Sodium azide
Precaution of Use:	This product contains Sodium azide: a POISONOUS AND HAZARDOUS SUBSTANCE which should be handled by trained staff only.
Storage:	4 °C, -20 °C
Expiry Date:	6 months

Images



Western Blotting

Image 1. All lanes : Anti-GPSM2 Antibody (N-Term) at 1:2000 dilution Lane 1: U-2OS whole cell lysate Lane 2: A431 whole cell lysate Lysates/proteins at 20 µg per lane. Secondary Goat Anti-Rabbit IgG, (H+L), Peroxidase conjugated at 1/10000 dilution. Predicted band size : 77 kDa Blocking/Dilution buffer: 5 % NFDM/TBST.