

Datasheet for ABIN6243687
anti-HCRTR1 antibody (AA 256-291)[Go to Product page](#)

1 Image

Overview

Quantity:	400 µL
Target:	HCRTR1
Binding Specificity:	AA 256-291
Reactivity:	Human
Host:	Rabbit
Clonality:	Polyclonal
Conjugate:	This HCRTR1 antibody is un-conjugated
Application:	Western Blotting (WB)

Product Details

Immunogen:	This HCRTR1 antibody is generated from a rabbit immunized with a KLH conjugated synthetic peptide between 256-291 amino acids from the Central region of human HCRTR1.
Clone:	RB51454
Isotype:	Ig Fraction
Purification:	This antibody is purified through a protein A column, followed by peptide affinity purification.

Target Details

Target:	HCRTR1
Alternative Name:	HCRTR1 (HCRTR1 Products)
Background:	Moderately selective excitatory receptor for orexin-A and, with a lower affinity, for orexin-B

Target Details

neuropeptide. Seems to be exclusively coupled to the G(q) subclass of heteromeric G proteins, which activates the phospholipase C mediated signaling cascade (By similarity).

Molecular Weight: 47536

UniProt: [O43613](#)

Pathways: [Feeding Behaviour](#)

Application Details

Application Notes: WB: 1:500-1:1000

Restrictions: For Research Use only

Handling

Format: Liquid

Buffer: Purified polyclonal antibody supplied in PBS with 0.09 % (W/V) sodium azide.

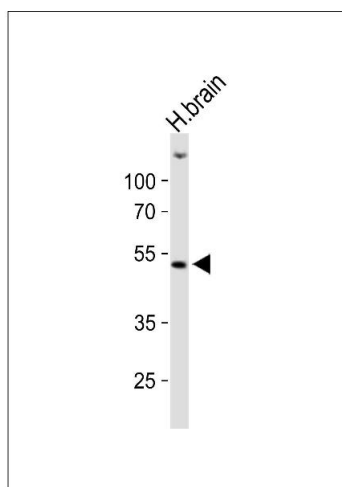
Preservative: Sodium azide

Precaution of Use: This product contains Sodium azide: a POISONOUS AND HAZARDOUS SUBSTANCE which should be handled by trained staff only.

Storage: 4 °C, -20 °C

Expiry Date: 6 months

Images



Western Blotting

Image 1. Western blot analysis of lysate from human brain tissue lysate, using HCRT1 Antibody (Center) (ABIN6243687 and ABIN6577775). (ABIN6243687 and ABIN6577775) was diluted at 1:1000. A goat anti-rabbit IgG H&L(HRP) at 1:10000 dilution was used as the secondary antibody. Lysate at 20 µg.