

Datasheet for ABIN6243699
anti-OTX2 antibody (AA 102-135)[Go to Product page](#)

1 Image

Overview

Quantity:	400 µL
Target:	OTX2
Binding Specificity:	AA 102-135
Reactivity:	Human
Host:	Rabbit
Clonality:	Polyclonal
Conjugate:	This OTX2 antibody is un-conjugated
Application:	Western Blotting (WB)

Product Details

Immunogen:	This OTX2 antibody is generated from a rabbit immunized with a KLH conjugated synthetic peptide between 102-135 amino acids from the Central region of human OTX2.
Clone:	RB50908
Isotype:	Ig Fraction
Purification:	This antibody is purified through a protein A column, followed by peptide affinity purification.

Target Details

Target:	OTX2
Alternative Name:	OTX2 (OTX2 Products)
Background:	Probably plays a role in the development of the brain and the sense organs. Can bind to the

Target Details

	BCD target sequence (BTS): 5'-TCTAATCCC-3'.
Molecular Weight:	31636
UniProt:	P32243
Pathways:	Dopaminergic Neurogenesis

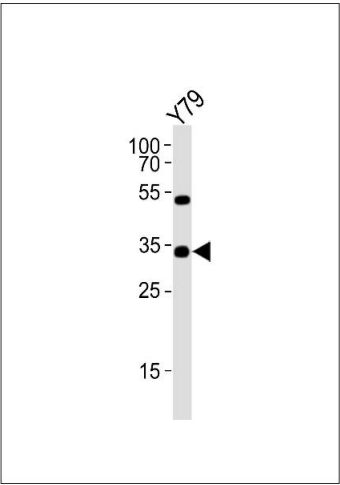
Application Details

Application Notes:	WB: 1:1000
Restrictions:	For Research Use only

Handling

Format:	Liquid
Buffer:	Purified polyclonal antibody supplied in PBS with 0.09 % (W/V) sodium azide.
Preservative:	Sodium azide
Precaution of Use:	This product contains Sodium azide: a POISONOUS AND HAZARDOUS SUBSTANCE which should be handled by trained staff only.
Storage:	4 °C,-20 °C
Expiry Date:	6 months

Images



Western Blotting

Image 1. Western blot analysis of lysate from Y79 cell line, using OTX2 Antibody (Center) (ABIN6243699 and ABIN6577613). (ABIN6243699 and ABIN6577613) was diluted at 1:1000. A goat anti-rabbit IgG H&L(HRP) at 1:10000 dilution was used as the secondary antibody. Lysate at 35 µg.