



[Go to Product page](#)

Datasheet for ABIN6243707
anti-Kdm6b antibody (AA 1023-1057)

1 Image

Overview

Quantity:	400 µL
Target:	Kdm6b
Binding Specificity:	AA 1023-1057
Reactivity:	Human, Mouse
Host:	Rabbit
Clonality:	Polyclonal
Conjugate:	This Kdm6b antibody is un-conjugated
Application:	Western Blotting (WB)

Product Details

Immunogen:	This Mouse Kdm6b antibody is generated from a rabbit immunized with a KLH conjugated synthetic peptide between 1023-1057 amino acids of Mouse Kdm6b.
Clone:	RB50943
Isotype:	Ig Fraction
Purification:	This antibody is purified through a protein A column, followed by peptide affinity purification.

Target Details

Target:	Kdm6b
Alternative Name:	Kdm6b (Kdm6b Products)
Background:	Histone demethylase that specifically demethylates 'Lys- 27' of histone H3, thereby playing a

Target Details

central role in histone code. Demethylates trimethylated and dimethylated H3 'Lys-27'. Plays a central role in regulation of posterior development, by regulating HOX gene expression. Involved in inflammatory response by participating in macrophage differentiation in case of inflammation by regulating gene expression and macrophage differentiation.

Molecular Weight: 176355

UniProt: [Q5NCY0](#)

Pathways: [Warburg Effect](#)

Application Details

Application Notes: WB: 1:1000

Restrictions: For Research Use only

Handling

Format: Liquid

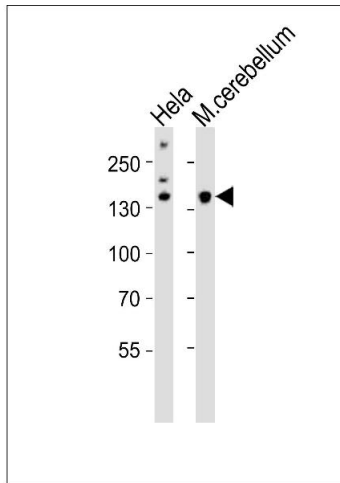
Buffer: Purified polyclonal antibody supplied in PBS with 0.09 % (W/V) sodium azide.

Preservative: Sodium azide

Precaution of Use: This product contains Sodium azide: a POISONOUS AND HAZARDOUS SUBSTANCE which should be handled by trained staff only.

Storage: 4 °C,-20 °C

Expiry Date: 6 months



Western Blotting

Image 1. Western blot analysis of lysates from HeLa cell line, mouse cerebellum tissue (from left to right), using Mouse Kdm6b Antibody (Center) (ABIN6243707 and ABIN6577624). (ABIN6243707 and ABIN6577624) was diluted at 1:1000 at each lane. A goat anti-rabbit IgG H&L(HRP) at 1:10000 dilution was used as the secondary antibody. Lysates at 20 μ g per lane.