



Datasheet for ABIN6243724  
**anti-EDC3 antibody (AA 162-197)**



[Go to Product page](#)

1 Image

Overview

Quantity:	400 µL
Target:	EDC3
Binding Specificity:	AA 162-197
Reactivity:	Zebrafish (Danio rerio)
Host:	Rabbit
Clonality:	Polyclonal
Conjugate:	This EDC3 antibody is un-conjugated
Application:	Western Blotting (WB)

Product Details

Immunogen:	This (DANRE) edc3 antibody is generated from a rabbit immunized with a KLH conjugated synthetic peptide between 162-197 amino acids from the Central region of (DANRE) edc3.
Clone:	RB47052
Isotype:	Ig Fraction
Purification:	This antibody is purified through a protein A column, followed by peptide affinity purification.

Target Details

Target:	EDC3
Alternative Name:	edc3 ( <a href="#">EDC3 Products</a> )
Background:	Binds single-stranded RNA. In the process of mRNA degradation, may play a role in mRNA

## Target Details

decapping (By similarity).

Molecular Weight: 54852

UniProt: [Q502M5](#)

## Application Details

Application Notes: WB: 1:1000

Restrictions: For Research Use only

## Handling

Format: Liquid

Buffer: Purified polyclonal antibody supplied in PBS with 0.09 % (W/V) sodium azide.

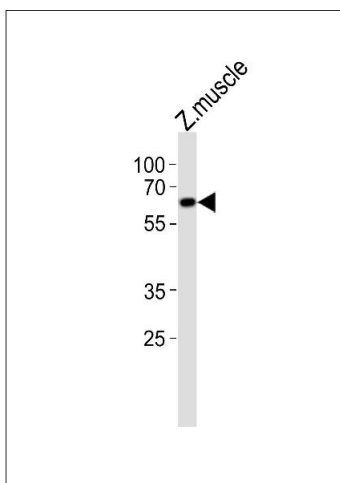
Preservative: Sodium azide

Precaution of Use: This product contains Sodium azide: a POISONOUS AND HAZARDOUS SUBSTANCE which should be handled by trained staff only.

Storage: 4 °C,-20 °C

Expiry Date: 6 months

## Images



### Western Blotting

**Image 1.** Western blot analysis of lysate from zebra fish muscle tissue lysate, using (DANRE) edc3 Antibody (Center) Azb18719a. Azb18719a was diluted at 1:1000. A goat anti-rabbit IgG H&L(HRP) at 1:10000 dilution was used as the secondary antibody. Lysate at 20 µg.