

Datasheet for ABIN6243754
anti-MAML2 antibody (AA 780-814)[Go to Product page](#)

2 Images

Overview

Quantity:	400 µL
Target:	MAML2
Binding Specificity:	AA 780-814
Reactivity:	Human
Host:	Rabbit
Clonality:	Polyclonal
Conjugate:	This MAML2 antibody is un-conjugated
Application:	Western Blotting (WB), Immunohistochemistry (Paraffin-embedded Sections) (IHC (p))

Product Details

Immunogen:	This MAML2 antibody is generated from a rabbit immunized with a KLH conjugated synthetic peptide between 780-814 amino acids from the Central region of human MAML2.
Clone:	RB52651
Isotype:	Ig Fraction
Purification:	This antibody is purified through a protein A column, followed by peptide affinity purification.

Target Details

Target:	MAML2
Alternative Name:	MAML2 (MAML2 Products)
Background:	Acts as a transcriptional coactivator for NOTCH proteins. Has been shown to amplify NOTCH-

Target Details

induced transcription of HES1. Potentiates activation by NOTCH3 and NOTCH4 more efficiently than MAML1 or MAML3.

Molecular Weight: 125197

UniProt: [Q8IZL2](#)

Application Details

Application Notes: WB: 1:2000. IHC-P: 1:25

Restrictions: For Research Use only

Handling

Format: Liquid

Buffer: Purified polyclonal antibody supplied in PBS with 0.09 % (W/V) sodium azide.

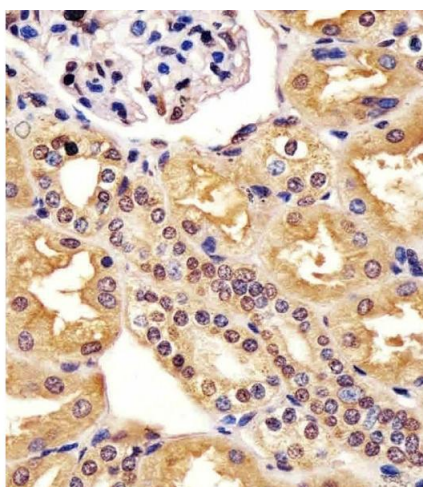
Preservative: Sodium azide

Precaution of Use: This product contains Sodium azide: a POISONOUS AND HAZARDOUS SUBSTANCE which should be handled by trained staff only.

Storage: 4 °C,-20 °C

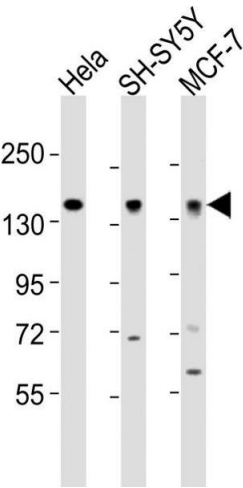
Expiry Date: 6 months

Images



Immunohistochemistry (Paraffin-embedded Sections)

Image 1. (ABIN6243754 and ABIN6578197) staining ML2 in human kidney tissue sections by Immunohistochemistry (IHC-P - paraformaldehyde-fixed, paraffin-embedded sections). Tissue was fixed with formaldehyde and blocked with 3 % BSA for 0.5 hour at room temperature, antigen retrieval was by heat mediation with a citrate buffer (pH 6). Samples were incubated with primary antibody (1/25) for 1 hour at 37 °C. An undiluted biotinylated goat polyvalent antibody was used as the secondary antibody.



Western Blotting

Image 2. All lanes : Anti-ML2 Antibody (Center) at 1:2000 dilution Lane 1: HeLa whole cell lysates Lane 2: SH-SY5Y whole cell lysates Lane 3: MCF-7 whole cell lysates Lysates/proteins at 20 µg per lane. Secondary Goat Anti-Rabbit IgG, (H+L), Peroxidase conjugated at 1/10000 dilution Predicted band size : 125 kDa Blocking/Dilution buffer: 5 % NFDM/TBST.