

Datasheet for ABIN6243763  
**anti-KISS1 antibody (AA 115-145)**



[Go to Product page](#)

3 Images

## Overview

Quantity:	400 µL
Target:	KISS1
Binding Specificity:	AA 115-145
Reactivity:	Human
Host:	Rabbit
Clonality:	Polyclonal
Conjugate:	This KISS1 antibody is un-conjugated
Application:	Western Blotting (WB), Immunofluorescence (IF)

## Product Details

Immunogen:	This KISS1 antibody is generated from a rabbit immunized with a KLH conjugated synthetic peptide between 115-145 amino acids from the human region of human KISS1.
Clone:	RB53799
Isotype:	Ig Fraction
Purification:	This antibody is purified through a protein A column, followed by peptide affinity purification.

## Target Details

Target:	KISS1
Alternative Name:	KISS1 ( <a href="#">KISS1 Products</a> )
Background:	Metastasis suppressor protein in malignant melanomas and in some breast cancers. May

## Target Details

regulate events downstream of cell- matrix adhesion, perhaps involving cytoskeletal reorganization. Generates a C-terminally amidated peptide, metastin which functions as the endogenous ligand of the G-protein coupled receptor GPR54. Activation of the receptor inhibits cell proliferation and cell migration, key characteristics of tumor metastasis. Kp-10 is a decapeptide derived from the primary translation product, isolated in conditioned medium of first trimester trophoblast. Kp-10, but not other kisspeptins, increased intracellular Ca(2+) levels in isolated first trimester trophoblasts. Kp-10 is a paracrine/endocrine regulator in fine- tuning trophoblast invasion generated by the trophoblast itself. The receptor is also essential for normal gonadotropin-released hormone physiology and for puberty. The hypothalamic KiSS1/GPR54 system is a pivotal factor in central regulation of the gonadotropic axis at puberty and in adulthood.

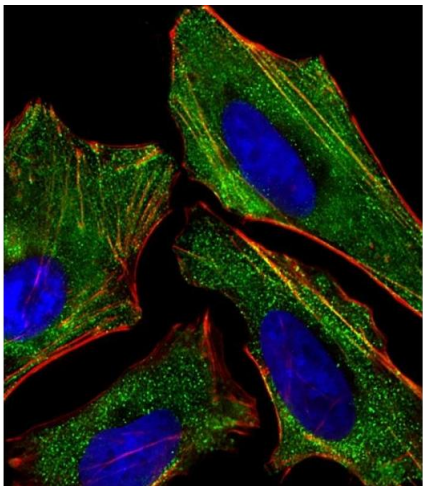
Molecular Weight:	14705
UniProt:	<a href="#">Q15726</a>
Pathways:	<a href="#">Positive Regulation of Peptide Hormone Secretion</a>

## Application Details

Application Notes:	IF: 1:25. WB: 1:2000. WB: 1:2000
Restrictions:	For Research Use only

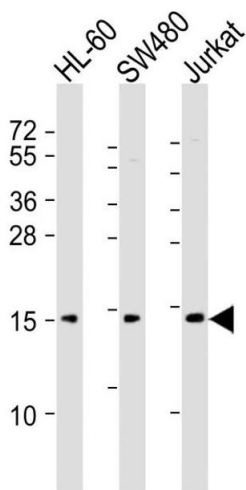
## Handling

Format:	Liquid
Buffer:	Purified polyclonal antibody supplied in PBS with 0.09 % (W/V) sodium azide.
Preservative:	Sodium azide
Precaution of Use:	This product contains Sodium azide: a POISONOUS AND HAZARDOUS SUBSTANCE which should be handled by trained staff only.
Storage:	4 °C,-20 °C
Expiry Date:	6 months



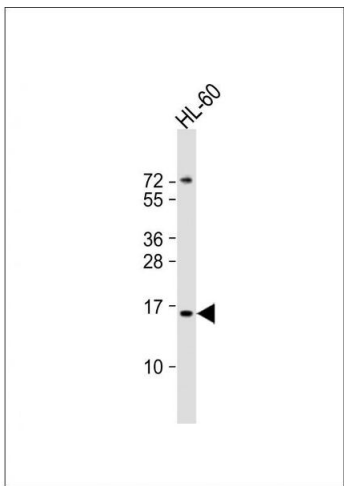
Immunofluorescence

**Image 1.** Immunofluorescent analysis of 4 % paraformaldehyde-fixed, 0.1 % Triton X-100 permeabilized HeLa (human cervical epithelial adenocarcinoma cell line) cells labeling KISS1 with (ABIN6243763 and ABIN6578199) at 1/25 dilution, followed by Dylight® 488-conjugated goat anti-rabbit IgG (NK179883) secondary antibody at 1/200 dilution (green). Immunofluorescence image showing cytoplasm staining on HeLa cell line. Cytoplasmic actin is detected with Dylight® 554 Phalloidin (PD18466410) at 1/100 dilution (red).The nuclear counter stain is DI (blue).



Western Blotting

**Image 2.** All lanes : Anti-KISS1 Antibody (C-Term) at 1:2000 dilution Lane 1: HL-60 whole cell lysates Lane 2: S whole cell lysates Lane 3: Jurkat whole cell lysates Lysates/proteins at 20 µg per lane. Secondary Goat Anti-Rabbit IgG, (H+L), Peroxidase conjugated at 1/10000 dilution Predicted band size : 15 kDa Blocking/Dilution buffer: 5 % NFDm/TBST.



Western Blotting

**Image 3.** Anti-KISS1 Antibody (C-Term)at 1:2000 dilution + HL-60 whole cell lysates Lysates/proteins at 20 µg per lane. Secondary Goat Anti-Rabbit IgG, (H+L), Peroxidase conjugated at 1/10000 dilution Predicted band size : 15 kDa Blocking/Dilution buffer: 5 % NFDm/TBST.