



[Go to Product page](#)

Datasheet for ABIN6243764
anti-KISS1 antibody (AA 20-52)

4 Images

Overview

Quantity:	400 µL
Target:	KISS1
Binding Specificity:	AA 20-52
Reactivity:	Human
Host:	Rabbit
Clonality:	Polyclonal
Conjugate:	This KISS1 antibody is un-conjugated
Application:	Western Blotting (WB), Immunohistochemistry (Paraffin-embedded Sections) (IHC (p))

Product Details

Immunogen:	This KISS1 antibody is generated from a rabbit immunized with a KLH conjugated synthetic peptide between 20-52 amino acids from human KISS1.
Clone:	RB53797
Isotype:	Ig Fraction
Purification:	This antibody is purified through a protein A column, followed by peptide affinity purification.

Target Details

Target:	KISS1
Alternative Name:	KISS1 (KISS1 Products)
Background:	Metastasis suppressor protein in malignant melanomas and in some breast cancers. May

Target Details

regulate events downstream of cell- matrix adhesion, perhaps involving cytoskeletal reorganization. Generates a C-terminally amidated peptide, metastin which functions as the endogenous ligand of the G-protein coupled receptor GPR54. Activation of the receptor inhibits cell proliferation and cell migration, key characteristics of tumor metastasis. Kp-10 is a decapeptide derived from the primary translation product, isolated in conditioned medium of first trimester trophoblast. Kp-10, but not other kisspeptins, increased intracellular Ca(2+) levels in isolated first trimester trophoblasts. Kp-10 is a paracrine/endocrine regulator in fine- tuning trophoblast invasion generated by the trophoblast itself. The receptor is also essential for normal gonadotropin-released hormone physiology and for puberty. The hypothalamic KiSS1/GPR54 system is a pivotal factor in central regulation of the gonadotropic axis at puberty and in adulthood.

Molecular Weight: 14705

UniProt: [Q15726](#)

Pathways: [Positive Regulation of Peptide Hormone Secretion](#)

Application Details

Application Notes: WB: 1:2000. WB: 1:2000. WB: 1:500. IHC-P: 1:25

Restrictions: For Research Use only

Handling

Format: Liquid

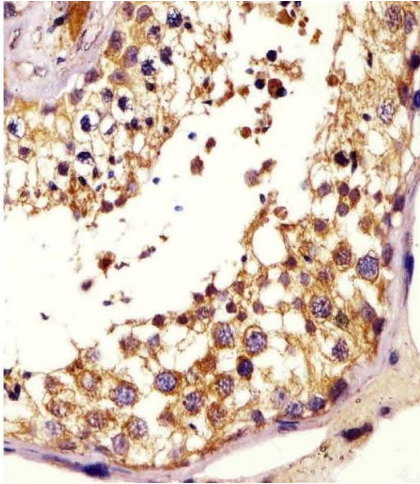
Buffer: Purified polyclonal antibody supplied in PBS with 0.09 % (W/V) sodium azide.

Preservative: Sodium azide

Precaution of Use: This product contains Sodium azide: a POISONOUS AND HAZARDOUS SUBSTANCE which should be handled by trained staff only.

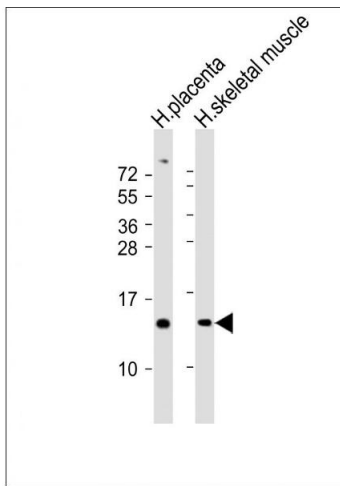
Storage: 4 °C,-20 °C

Expiry Date: 6 months



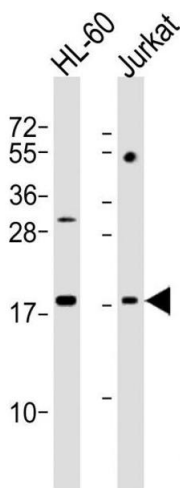
Immunohistochemistry (Paraffin-embedded Sections)

Image 1. (ABIN6243764 and ABIN6578200) staining KISS1 in human testis tissue sections by Immunohistochemistry (IHC-P - paraformaldehyde-fixed, paraffin-embedded sections). Tissue was fixed with formaldehyde and blocked with 3 % BSA for 0.5 hour at room temperature, antigen retrieval was by heat mediation with a citrate buffer (pH 6). Samples were incubated with primary antibody (1/25) for 1 hour at 37 °C. A undiluted biotinylated goat polyvalent antibody was used as the secondary antibody.



Western Blotting

Image 2. All lanes : Anti-KISS1 Antibody (N-Term) at 1:2000 dilution Lane 1: human placenta lysates Lane 2: human skeletal muscle lysates Lysates/proteins at 20 µg per lane. Secondary Goat Anti-Rabbit IgG, (H+L), Peroxidase conjugated at 1/10000 dilution Predicted band size : 15 kDa Blocking/Dilution buffer: 5 % NFDm/TBST.



Western Blotting

Image 3. All lanes : Anti-KISS1 Antibody (N-Term) at 1:2000 dilution Lane 1: HL-60 whole cell lysates Lane 2: Jurkat whole cell lysates Lysates/proteins at 20 µg per lane. Secondary Goat Anti-Rabbit IgG, (H+L), Peroxidase conjugated at 1/10000 dilution Predicted band size : 15 kDa Blocking/Dilution buffer: 5 % NFDm/TBST.

Please check the [product details page](#) for more images. Overall 4 images are available for ABIN6243764.