



[Go to Product page](#)

Datasheet for ABIN6243767

anti-Lipase I antibody (AA 224-258)

1 Image

Overview

Quantity:	400 µL
Target:	Lipase I (LIPI)
Binding Specificity:	AA 224-258
Reactivity:	Human
Host:	Rabbit
Clonality:	Polyclonal
Conjugate:	This Lipase I antibody is un-conjugated
Application:	Western Blotting (WB)

Product Details

Immunogen:	This LIPI antibody is generated from a rabbit immunized with a KLH conjugated synthetic peptide between 224-258 amino acids from the Central region of human LIPI.
Clone:	RB50932
Isotype:	Ig Fraction
Purification:	This antibody is purified through a protein A column, followed by peptide affinity purification.

Target Details

Target:	Lipase I (LIPI)
Alternative Name:	LIPI (LIPI Products)
Background:	Hydrolyzes specifically phosphatidic acid (PA) to produce 2-acyl lysophosphatidic acid (LPA, a

Target Details

potent bioactive lipid mediator) and fatty acid. Does not hydrolyze other phospholipids, like phosphatidylserine (PS), phosphatidylcholine (PC) and phosphatidylethanolamine (PE) or triacylglycerol (TG).

Molecular Weight: 52922

UniProt: [Q6XZB0](#)

Application Details

Application Notes: WB: 1:1000

Restrictions: For Research Use only

Handling

Format: Liquid

Buffer: Purified polyclonal antibody supplied in PBS with 0.09 % (W/V) sodium azide.

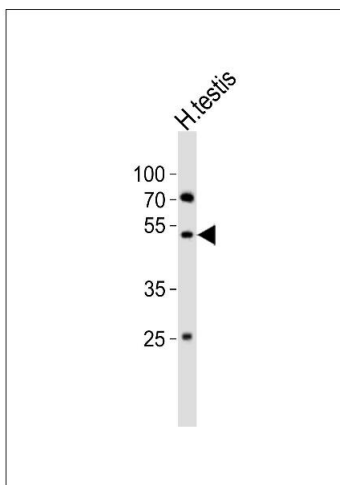
Preservative: Sodium azide

Precaution of Use: This product contains Sodium azide: a POISONOUS AND HAZARDOUS SUBSTANCE which should be handled by trained staff only.

Storage: 4 °C, -20 °C

Expiry Date: 6 months

Images



Western Blotting

Image 1. Western blot analysis of lysate from human testis tissue lysate, using LIPI Antibody (Center) (ABIN6243767 and ABIN6577645). (ABIN6243767 and ABIN6577645) was diluted at 1:1000. A goat anti-rabbit IgG H&L(HRP) at 1:10000 dilution was used as the secondary antibody. Lysate at 20 µg.