

Datasheet for ABIN6243775
anti-PABPC3 antibody (AA 84-117)[Go to Product page](#)

4 Images

Overview

Quantity:	50 µL
Target:	PABPC3
Binding Specificity:	AA 84-117
Reactivity:	Human
Host:	Rabbit
Clonality:	Polyclonal
Conjugate:	This PABPC3 antibody is un-conjugated
Application:	Western Blotting (WB), Immunohistochemistry (Paraffin-embedded Sections) (IHC (p)), Flow Cytometry (FACS)

Product Details

Immunogen:	This PABPC3 antibody is generated from a rabbit immunized with a KLH conjugated synthetic peptide between 84-117 amino acids from human PABPC3.
Clone:	RB55063
Isotype:	Ig Fraction
Purification:	This antibody is purified through a protein A column, followed by peptide affinity purification.

Target Details

Target:	PABPC3
Alternative Name:	PABPC3 (PABPC3 Products)

Target Details

Background: Binds the poly(A) tail of mRNA. May be involved in cytoplasmic regulatory processes of mRNA metabolism. Binds poly(A) with a slightly lower affinity as compared to PABPC1.

Molecular Weight: 70031

UniProt: [Q9H361](#)

Application Details

Application Notes: WB: 1:2000. IHC-P: 1:25. IHC-P: 1:25. FC: 1:25

Restrictions: For Research Use only

Handling

Format: Liquid

Buffer: Purified polyclonal antibody supplied in PBS with 0.09 % (W/V) sodium azide.

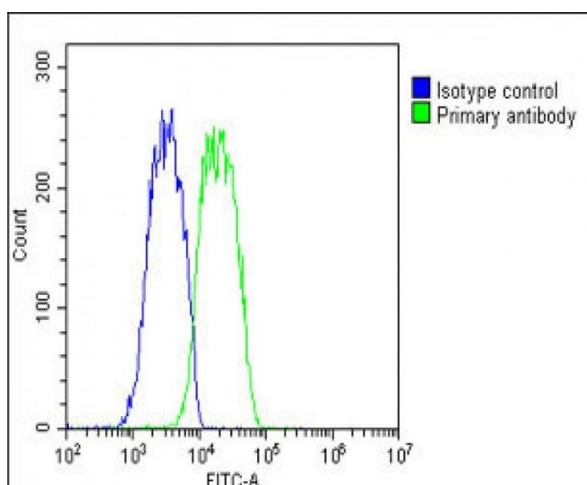
Preservative: Sodium azide

Precaution of Use: This product contains Sodium azide: a POISONOUS AND HAZARDOUS SUBSTANCE which should be handled by trained staff only.

Storage: 4 °C,-20 °C

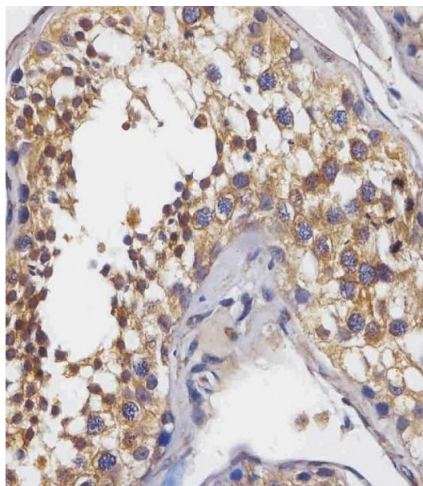
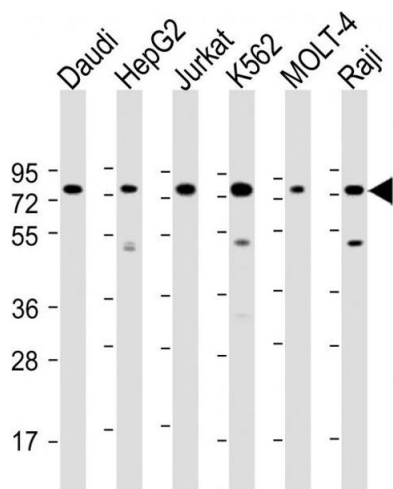
Expiry Date: 6 months

Images



Flow Cytometry

Image 1. Overlay histogram showing HepG2 cells stained with (green line). The cells were fixed with 2 % paraformaldehyde (10 min) and then permeabilized with 90 % methanol for 10 min. The cells were then incubated in 2 % bovine serum albumin to block non-specific protein-protein interactions followed by the antibody (1:25 dilution) for 60 min at 37 °C. The secondary antibody used was Goat-Anti-Rabbit IgG, DyLight® 488 Conjugated Highly Cross-Adsorbed(OH191631) at 1/200 dilution for 40 min at 37 °C. Isotype control antibody (blue line) was rabbit IgG1 (1 µg/1x10⁶ cells) used under the same conditions. Acquisition



of >10,000 events was performed.

Western Blotting

Image 2. All lanes : Anti-BPC3 Antibody (N-Term) at 1:2000 dilution Lane 1: Daudi whole cell lysate Lane 2: HepG2 whole cell lysate Lane 3: Jurkat whole cell lysate Lane 4: K562 whole cell lysate Lane 5: MOLT-4 whole cell lysate Lane 5: Raji whole cell lysate Lysates/proteins at 20 µg per lane. Secondary Goat Anti-Rabbit IgG, (H+L), Peroxidase conjugated at 1/10000 dilution. Predicted band size : 70 kDa Blocking/Dilution buffer: 5 % NFDm/TBST.

Immunohistochemistry (Paraffin-embedded Sections)

Image 3. staining BPC3 in human testis tissue sections by Immunohistochemistry (IHC-P - paraformaldehyde-fixed, paraffin-embedded sections). Tissue was fixed with formaldehyde and blocked with 3 % BSA for 0.5 hour at room temperature, antigen retrieval was by heat mediation with a citrate buffer (pH 6). Samples were incubated with primary antibody (1/25) for 1 hours at 37 °C. A undiluted biotinylated goat polyvalent antibody was used as the secondary antibody.

Please check the [product details page](#) for more images. Overall 4 images are available for ABIN6243775.