

Datasheet for ABIN6243782

anti-LRPPRC antibody (AA 847-876)[Go to Product page](#)**1** Image

Overview

Quantity:	200 µL
Target:	LRPPRC
Binding Specificity:	AA 847-876
Reactivity:	Human, Mouse
Host:	Rabbit
Clonality:	Polyclonal
Conjugate:	This LRPPRC antibody is un-conjugated
Application:	Western Blotting (WB)

Product Details

Immunogen:	This LRPPRC antibody is generated from a rabbit immunized with a KLH conjugated synthetic peptide between 847-876 amino acids from the Central region of human LRPPRC.
Clone:	RB53981
Isotype:	Ig Fraction
Predicted Reactivity:	Rat
Purification:	This antibody is purified through a protein A column, followed by peptide affinity purification.

Target Details

Target:	LRPPRC
Alternative Name:	LRPPRC (LRPPRC Products)

Target Details

Background: May play a role in RNA metabolism in both nuclei and mitochondria. In the nucleus binds to HNRPA1-associated poly(A) mRNAs and is part of nmRNP complexes at late stages of mRNA maturation which are possibly associated with nuclear mRNA export. May bind mature mRNA in the nucleus outer membrane. In mitochondria binds to poly(A) mRNA. Plays a role in translation or stability of mitochondrially encoded cytochrome c oxidase (COX) subunits. May be involved in transcription regulation. Cooperates with PPARGC1A to regulate certain mitochondrially encoded genes and gluconeogenic genes and may regulate docking of PPARGC1A to transcription factors. Seems to be involved in the transcription regulation of the multidrug-related genes MDR1 and MVP. Part of a nuclear factor that binds to the invMED1 element of MDR1 and MVP gene promoters. Binds single-stranded DNA (By similarity).

Molecular Weight: 157905

UniProt: [P42704](#)

Application Details

Application Notes: WB: 1:2000

Restrictions: For Research Use only

Handling

Format: Liquid

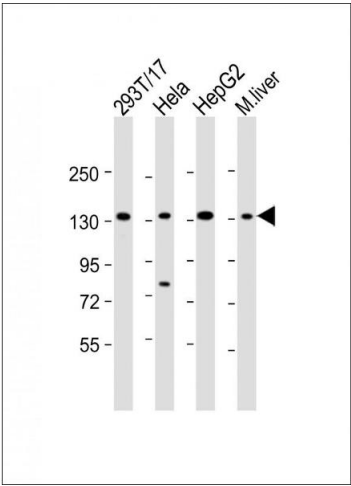
Buffer: Purified polyclonal antibody supplied in PBS with 0.09 % (W/V) sodium azide.

Preservative: Sodium azide

Precaution of Use: This product contains Sodium azide: a POISONOUS AND HAZARDOUS SUBSTANCE which should be handled by trained staff only.

Storage: 4 °C,-20 °C

Expiry Date: 6 months



Western Blotting

Image 1. All lanes : Anti-LRRC Antibody (Center) at 1:2000 dilution Lane 1: 293T/17 whole cell lysate Lane 2: HeLa whole cell lysate Lane 3: HepG2 whole cell lysate Lane 4: mouse liver lysate Lysates/proteins at 20 µg per lane. Secondary Goat Anti-Rabbit IgG, (H+L), Peroxidase conjugated at 1/10000 dilution. Predicted band size : 158 kDa Blocking/Dilution buffer: 5 % NFDM/TBST.