

Datasheet for ABIN6243805
anti-SH3G2 antibody (AA 127-158)[Go to Product page](#)

1 Image

Overview

Quantity:	400 µL
Target:	SH3G2
Binding Specificity:	AA 127-158
Reactivity:	Human
Host:	Rabbit
Clonality:	Polyclonal
Conjugate:	This SH3G2 antibody is un-conjugated
Application:	Western Blotting (WB)

Product Details

Immunogen:	This SH3GL2 antibody is generated from a rabbit immunized with a KLH conjugated synthetic peptide between 127-158 amino acids from the Central region of human SH3GL2.
Clone:	RB52936
Isotype:	Ig Fraction
Purification:	This antibody is purified through a protein A column, followed by peptide affinity purification.

Target Details

Target:	SH3G2
Alternative Name:	SH3GL2 (SH3G2 Products)
Background:	Implicated in synaptic vesicle endocytosis. May recruit other proteins to membranes with high

Target Details

	curvature.
Molecular Weight:	39962
UniProt:	Q99962
Pathways:	Neurotrophin Signaling Pathway , EGFR Downregulation

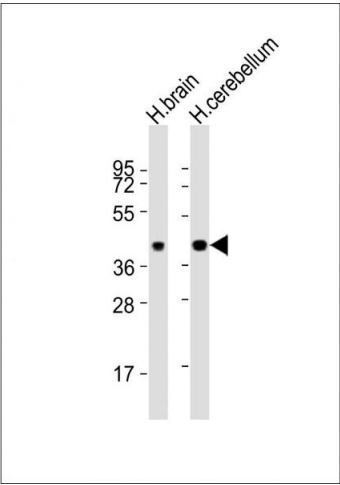
Application Details

Application Notes:	WB: 1:8000
Restrictions:	For Research Use only

Handling

Format:	Liquid
Buffer:	Purified polyclonal antibody supplied in PBS with 0.09 % (W/V) sodium azide.
Preservative:	Sodium azide
Precaution of Use:	This product contains Sodium azide: a POISONOUS AND HAZARDOUS SUBSTANCE which should be handled by trained staff only.
Storage:	4 °C,-20 °C
Expiry Date:	6 months

Images



Western Blotting

Image 1. All lanes : Anti-SH3GL2 Antibody (Center) at 1:8000 dilution Lane 1: human brain lysates Lane 2: human cerebellum lysates Lysates/proteins at 20 µg per lane. Secondary Goat Anti-Rabbit IgG, (H+L), Peroxidase conjugated at 1/10000 dilution Predicted band size : 40 kDa Blocking/Dilution buffer: 5 % NFDM/TBST.