

Datasheet for ABIN6243809
anti-SH3GL3 antibody (C-Term)[Go to Product page](#)

1 Image

Overview

Quantity:	400 µL
Target:	SH3GL3
Binding Specificity:	AA 250-282, C-Term
Reactivity:	Human
Host:	Rabbit
Clonality:	Polyclonal
Conjugate:	This SH3GL3 antibody is un-conjugated
Application:	Western Blotting (WB)

Product Details

Immunogen:	This SH3GL3 antibody is generated from a rabbit immunized with a KLH conjugated synthetic peptide between 250-282 amino acids from the C-terminal region of human SH3GL3.
Clone:	RB52938
Isotype:	Ig Fraction
Purification:	This antibody is purified through a protein A column, followed by peptide affinity purification.

Target Details

Target:	SH3GL3
Alternative Name:	SH3GL3 (SH3GL3 Products)
Background:	Implicated in endocytosis. May recruit other proteins to membranes with high curvature (By

Target Details

similarity).

Molecular Weight: 39285

UniProt: [Q99963](#)

Application Details

Application Notes: WB: 1:2000

Restrictions: For Research Use only

Handling

Format: Liquid

Buffer: Purified polyclonal antibody supplied in PBS with 0.09 % (W/V) sodium azide.

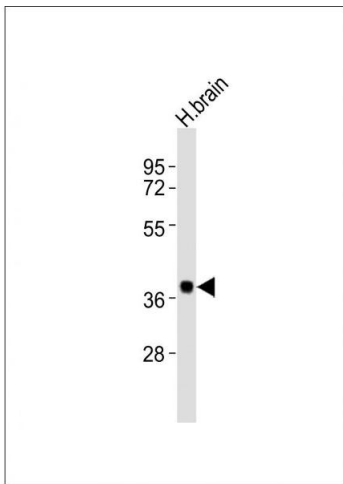
Preservative: Sodium azide

Precaution of Use: This product contains Sodium azide: a POISONOUS AND HAZARDOUS SUBSTANCE which should be handled by trained staff only.

Storage: 4 °C,-20 °C

Expiry Date: 6 months

Images



Western Blotting

Image 1. Anti-SH3GL3 Antibody (C-term) at 1:2000 dilution + human brain lysates. Lysates/proteins at 20 µg per lane. Secondary: Goat Anti-Rabbit IgG, (H+L), Peroxidase conjugated at 1/10000 dilution. Predicted band size: 39 kDa. Blocking/Dilution buffer: 5 % NFDm/TBST.