



[Go to Product page](#)

Datasheet for ABIN6243814

anti-FLYWCH1 antibody (AA 414-447)

1 Image

Overview

Quantity:	200 µL
Target:	FLYWCH1
Binding Specificity:	AA 414-447
Reactivity:	Mouse
Host:	Rabbit
Clonality:	Polyclonal
Conjugate:	This FLYWCH1 antibody is un-conjugated
Application:	Western Blotting (WB)

Product Details

Immunogen:	This FLYWCH1 antibody is generated from a rabbit immunized with a KLH conjugated synthetic peptide between 414-447 amino acids from the Central region of human FLYWCH1.
Clone:	RB53627
Isotype:	Ig Fraction
Purification:	This antibody is purified through a protein A column, followed by peptide affinity purification.

Target Details

Target:	FLYWCH1
Alternative Name:	FLYWCH1 (FLYWCH1 Products)
Molecular Weight:	80108

Target Details

UniProt: [Q4VC44](#)

Application Details

Application Notes: WB: 1:2000

Restrictions: For Research Use only

Handling

Format: Liquid

Buffer: Purified polyclonal antibody supplied in PBS with 0.09 % (W/V) sodium azide.

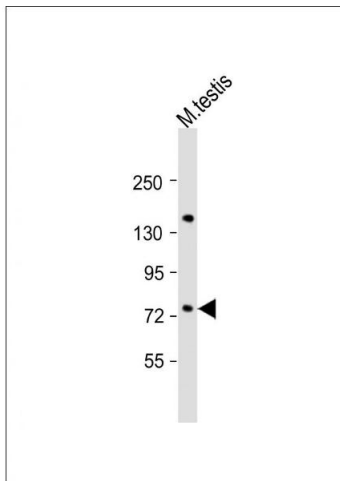
Preservative: Sodium azide

Precaution of Use: This product contains Sodium azide: a POISONOUS AND HAZARDOUS SUBSTANCE which should be handled by trained staff only.

Storage: 4 °C,-20 °C

Expiry Date: 6 months

Images



Western Blotting

Image 1. Anti-FLYWCH1 Antibody (Center) at 1:2000 dilution + mouse testis lysate Lysates/proteins at 20 µg per lane. Secondary Goat Anti-Rabbit IgG, (H+L), Peroxidase conjugated at 1/10000 dilution. Predicted band size : 80 kDa
Blocking/Dilution buffer: 5 % NFDM/TBST.