

Datasheet for ABIN6243819

**anti-PLA2G4F antibody (AA 289-331)**[Go to Product page](#)**1** Image

## Overview

|                      |  |
|----------------------|--|
| Quantity:            | 200 µL                                 |
| Target:              | PLA2G4F                                |
| Binding Specificity: | AA 289-331                             |
| Reactivity:          | Human, Mouse                           |
| Host:                | Rabbit                                 |
| Clonality:           | Polyclonal                             |
| Conjugate:           | This PLA2G4F antibody is un-conjugated |
| Application:         | Western Blotting (WB)                  |

## Product Details

|               |  |
|---------------|--|
| Immunogen:    | This PLA2G4F antibody is generated from a rabbit immunized with a KLH conjugated synthetic peptide between 289-331 amino acids from the Central region of human PLA2G4F. |
| Clone:        | RB55091  |
| Isotype:      | Ig Fraction  |
| Purification: | This antibody is purified through a protein A column, followed by peptide affinity purification.   |

## Target Details

|                   |  |
|-------------------|--|
| Target:           | PLA2G4F  |
| Alternative Name: | PLA2G4F ( <a href="#">PLA2G4F Products</a> )   |
| Background:       | Calcium-dependent phospholipase A2 that selectively hydrolyzes glycerophospholipids in the |

## Target Details

|                   |  |
|-------------------|--|
|                   | sn-2 position. Has higher enzyme activity for phosphatidylethanolamine than phosphatidylcholine (By similarity). |
| Molecular Weight: | 95082  |
| UniProt:          | <a href="#">Q68DD2</a>   |

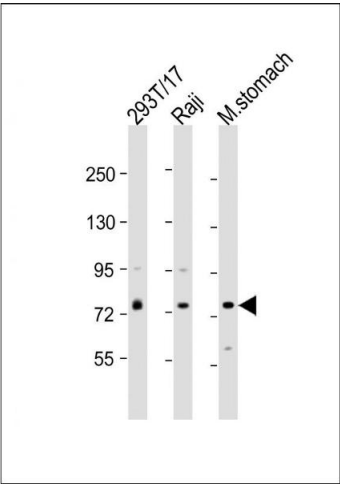
## Application Details

|                    |                       |
|--------------------|-----------------------|
| Application Notes: | WB: 1:2000            |
| Restrictions:      | For Research Use only |

## Handling

|                    |  |
|--------------------|--|
| Format:            | Liquid   |
| Buffer:            | Purified polyclonal antibody supplied in PBS with 0.09 % (W/V) sodium azide.   |
| Preservative:      | Sodium azide   |
| Precaution of Use: | This product contains Sodium azide: a POISONOUS AND HAZARDOUS SUBSTANCE which should be handled by trained staff only. |
| Storage:           | 4 °C,-20 °C  |
| Expiry Date:       | 6 months   |

## Images



### Western Blotting

**Image 1.** All lanes : Anti-PLA2G4F Antibody (Center) at 1:2000 dilution Lane 1: 293T/17 whole cell lysate Lane 2: Raji whole cell lysate Lane 3: mouse stomach lysate Lysates/proteins at 20 µg per lane. Secondary Goat Anti-Rabbit IgG, (H+L), Peroxidase conjugated at 1/10000 dilution. Predicted band size : 95 kDa Blocking/Dilution buffer: 5 % NFDM/TBST.