



[Go to Product page](#)

Datasheet for ABIN6243821

anti-Cystin 1 antibody (C-Term)

2 Images

Overview

Quantity:	400 µL
Target:	Cystin 1 (CYS1)
Binding Specificity:	AA 142-177, C-Term
Reactivity:	Human, Mouse
Host:	Rabbit
Clonality:	Polyclonal
Conjugate:	This Cystin 1 antibody is un-conjugated
Application:	Immunohistochemistry (Paraffin-embedded Sections) (IHC (p)), Western Blotting (WB)

Product Details

Immunogen:	This CYS1 antibody is generated from a rabbit immunized with a KLH conjugated synthetic peptide between 142-177 amino acids from the C-terminal region of human CYS1.
Clone:	RB49884
Isotype:	Ig Fraction
Purification:	This antibody is purified through a protein A column, followed by peptide affinity purification.

Target Details

Target:	Cystin 1 (CYS1)
Alternative Name:	CYS1 (CYS1 Products)
Molecular Weight:	16393

Target Details

UniProt: [Q717R9](#)

Application Details

Application Notes: WB: 1:1000. IHC-P: 1:25

Restrictions: For Research Use only

Handling

Format: Liquid

Buffer: Purified polyclonal antibody supplied in PBS with 0.09 % (W/V) sodium azide.

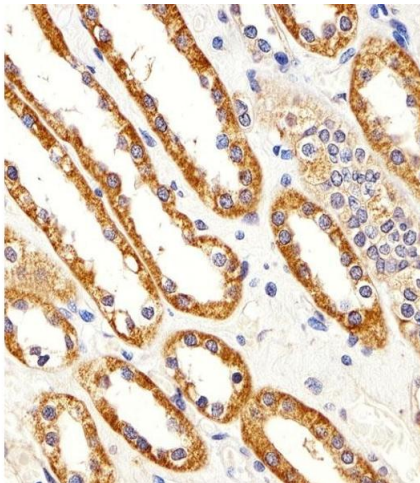
Preservative: Sodium azide

Precaution of Use: This product contains Sodium azide: a POISONOUS AND HAZARDOUS SUBSTANCE which should be handled by trained staff only.

Storage: 4 °C,-20 °C

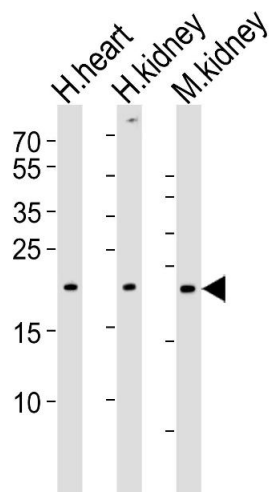
Expiry Date: 6 months

Images



Immunohistochemistry (Paraffin-embedded Sections)

Image 1. Immunohistochemical analysis of paraffin-embedded H.kidney section using CYS1 Antibody (C-term) (ABIN6243821 and ABIN6577434). (ABIN6243821 and ABIN6577434) was diluted at 1:25 dilution. A peroxidase-conjugated goat anti-rabbit IgG at 1:400 dilution was used as the secondary antibody, followed by DAB staining.



Western Blotting

Image 2. Western blot analysis of lysates from human heart, human kidney and mouse kidney tissue lysate (from left to right), using CYS1 Antibody (C-term) (ABIN6243821 and ABIN6577434). (ABIN6243821 and ABIN6577434) was diluted at 1:1000 at each lane. A goat anti-rabbit IgG H&L(HRP) at 1:5000 dilution was used as the secondary antibody. Lysates at 35 µg per lane.