

Datasheet for ABIN6243826
anti-PSMD3 antibody (AA 482-515)[Go to Product page](#)

4 Images

Overview

Quantity:	200 µL
Target:	PSMD3
Binding Specificity:	AA 482-515
Reactivity:	Human, Mouse
Host:	Rabbit
Clonality:	Polyclonal
Conjugate:	This PSMD3 antibody is un-conjugated
Application:	Western Blotting (WB), Flow Cytometry (FACS), Immunohistochemistry (Paraffin-embedded Sections) (IHC (p))

Product Details

Immunogen:	This PSMD3 antibody is generated from a rabbit immunized with a KLH conjugated synthetic peptide between 482-515 amino acids from human PSMD3.
Clone:	RB55247
Isotype:	Ig Fraction
Predicted Reactivity:	B
Purification:	This antibody is purified through a protein A column, followed by peptide affinity purification.

Target Details

Target:	PSMD3
---------	-------

Target Details

Alternative Name:	PSMD3 (PSMD3 Products)
Background:	Acts as a regulatory subunit of the 26 proteasome which is involved in the ATP-dependent degradation of ubiquitinated proteins.
Molecular Weight:	60978
UniProt:	O43242
Pathways:	Mitotic G1-G1/S Phases , DNA Replication , Synthesis of DNA , Ubiquitin Proteasome Pathway

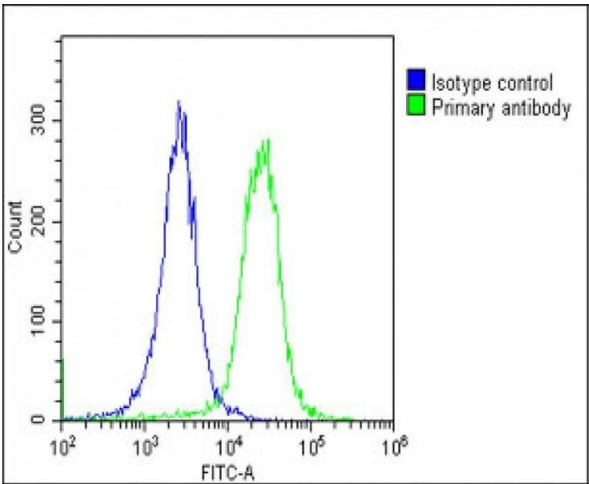
Application Details

Application Notes:	WB: 1:2000. IHC-P: 1:250. IHC-P: 1:250. FC: 1:25
Restrictions:	For Research Use only

Handling

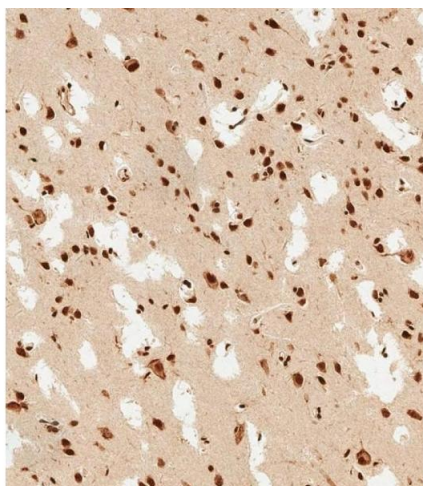
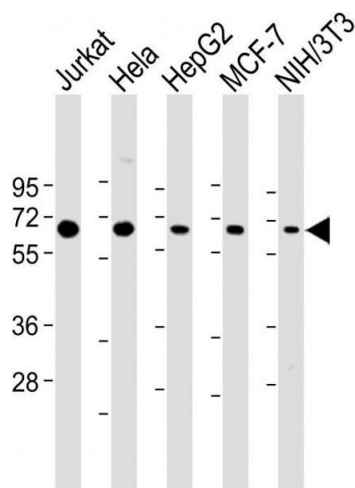
Format:	Liquid
Buffer:	Purified polyclonal antibody supplied in PBS with 0.09 % (W/V) sodium azide.
Preservative:	Sodium azide
Precaution of Use:	This product contains Sodium azide: a POISONOUS AND HAZARDOUS SUBSTANCE which should be handled by trained staff only.
Storage:	4 °C,-20 °C
Expiry Date:	6 months

Images



Flow Cytometry

Image 1. Overlay histogram showing HeLa cells stained with (ABIN6243826 and ABIN6578813)(green line). The cells were fixed with 2 % paraformaldehyde (10 min) and then permeabilized with 90 % methanol for 10 min. The cells were then incubated in 2 % bovine serum albumin to block non-specific protein-protein interactions followed by the antibody ((ABIN6243826 and ABIN6578813), 1:25 dilution) for 60 min at 37 °C. The secondary antibody used was Goat-



Anti-Rabbit IgG, DyLight® 488 Conjugated Highly Cross-Adsorbed(OE188374) at 1/200 dilution for 40 min at 37 °C. Isotype control antibody (blue line) was rabbit IgG1 (1 µg/1x10⁶ cells) used under the same conditions. Acquisition of >10,000 events was performed.

Western Blotting

Image 2. All lanes : Anti-PSMD3 Antibody (C-Term) at 1:2000 dilution Lane 1: Jurkat whole cell lysate Lane 2: HeLa whole cell lysate Lane 3: HepG2 whole cell lysate Lane 4: MCF-7 whole cell lysate Lane 5: NIH/3T3 whole cell lysate Lysates/proteins at 20 µg per lane. Secondary Goat Anti-Rabbit IgG, (H+L), Peroxidase conjugated at 1/10000 dilution. Predicted band size : 61 kDa Blocking/Dilution buffer: 5 % NFDN/TBST.

Immunohistochemistry (Paraffin-embedded Sections)

Image 3. (ABIN6243826 and ABIN6578813) staining PSMD3 in human brain tissue sections by Immunohistochemistry (IHC-P - paraformaldehyde-fixed, paraffin-embedded sections). Samples were incubated with primary antibody (1/250) for 1 hours at room temperature. A undiluted biotinylated goat polyvalent antibody was used as the secondary antibody.

Please check the [product details page](#) for more images. Overall 4 images are available for ABIN6243826.