



[Go to Product page](#)

Datasheet for ABIN6243829

anti-RGS20 antibody (AA 150-184)

1 Image

Overview

Quantity:	400 µL
Target:	RGS20
Binding Specificity:	AA 150-184
Reactivity:	Human
Host:	Rabbit
Clonality:	Polyclonal
Conjugate:	This RGS20 antibody is un-conjugated
Application:	Western Blotting (WB)

Product Details

Immunogen:	This RGS20 antibody is generated from a rabbit immunized with a KLH conjugated synthetic peptide between 150-184 amino acids from the Central region of human RGS20.
Clone:	RB49337
Isotype:	Ig Fraction
Purification:	This antibody is purified through a protein A column, followed by peptide affinity purification.

Target Details

Target:	RGS20
Alternative Name:	RGS20 (RGS20 Products)
Background:	Inhibits signal transduction by increasing the GTPase activity of G protein alpha subunits

Target Details

thereby driving them into their inactive GDP-bound form. Binds selectively to G(z)-alpha and G(alpha)-i2 subunits, accelerates their GTPase activity and regulates their signaling activities. The G(z)-alpha activity is inhibited by the phosphorylation and palmitoylation of the G- protein. Negatively regulates mu-opioid receptor-mediated activation of the G-proteins (By similarity).

Molecular Weight: 43692

UniProt: [O76081](#)

Pathways: [Myometrial Relaxation and Contraction, Regulation of G-Protein Coupled Receptor Protein Signaling](#)

Application Details

Application Notes: WB: 1:1000

Restrictions: For Research Use only

Handling

Format: Liquid

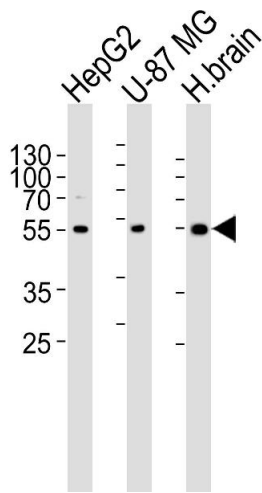
Buffer: Purified polyclonal antibody supplied in PBS with 0.09 % (W/V) sodium azide.

Preservative: Sodium azide

Precaution of Use: This product contains Sodium azide: a POISONOUS AND HAZARDOUS SUBSTANCE which should be handled by trained staff only.

Storage: 4 °C,-20 °C

Expiry Date: 6 months



Western Blotting

Image 1. Western blot analysis of lysates from HepG2, U-87 MG cell line and human brain tissue lysate (from left to right), using RGS20 Antibody (Center) (ABIN6243829 and ABIN6577411). (ABIN6243829 and ABIN6577411) was diluted at 1:1000 at each lane. A goat anti-rabbit IgG H&L(HRP) at 1:5000 dilution was used as the secondary antibody. Lysates at 35 μ g per lane.