



Datasheet for ABIN6243832
anti-PFKL antibody (AA 371-399)



[Go to Product page](#)

1 Image

1 Publication

Overview

Quantity:	400 µL
Target:	PFKL
Binding Specificity:	AA 371-399
Reactivity:	Human
Host:	Rabbit
Clonality:	Polyclonal
Conjugate:	This PFKL antibody is un-conjugated
Application:	Western Blotting (WB)

Product Details

Immunogen:	This PFKL antibody is generated from rabbits immunized with a KLH conjugated synthetic peptide between 371-399 amino acids from the Central region of human PFKL.
Clone:	RB6851
Isotype:	Ig Fraction
Purification:	This antibody is prepared by Saturated Ammonium Sulfate (SAS) precipitation followed by dialysis against PBS.

Target Details

Target:	PFKL
Alternative Name:	PFKL (PFKL Products)

Target Details

Background: Phosphofructokinase (PFK), a major regulatory enzyme in all cells of the body, catalyzes the metabolism of sugar, and thereby is pivotal in the production of energy to maintain normal cell function. In human there are three structural loci controlling PFK: M (muscle), L (liver), and P (platelet) type subunits, which are variably expressed in different tissues, human diploid fibroblasts and leukocytes express all three genes. PFK, a tetramer formed by the random association of the products of two separate gene loci to form the five possible tetramers. PFKs of muscle and liver are homotetramers of the M and L subunits, respectively. Red cells have all five isozymes: M4, M3L, M2L2, ML3, and L4. PFK is an allosteric enzyme activated by ADP, AMP, or fructose bisphosphate and inhibited by ATP or citrate. PFK catalyzes the key controlling step of glycolytic pathway. PFK deficiency can present as mild to life-threatening episodic illness. A hallmark sign of this disease is intermittent dark urine, with the color of the urine ranging from orange to dark coffee-brown, which commonly develops following strenuous exercise. The mean red cell PFK is elevated in persons with Down syndrome.

Molecular Weight: 85018

NCBI Accession: [NP_002617](#)

UniProt: [P17858](#)

Pathways: [Negative Regulation of Hormone Secretion](#), [Warburg Effect](#)

Application Details

Application Notes: WB: 1:1000

Restrictions: For Research Use only

Handling

Format: Liquid

Buffer: Purified polyclonal antibody supplied in PBS with 0.09 % (W/V) sodium azide.

Preservative: Sodium azide

Precaution of Use: This product contains Sodium azide: a POISONOUS AND HAZARDOUS SUBSTANCE which should be handled by trained staff only.

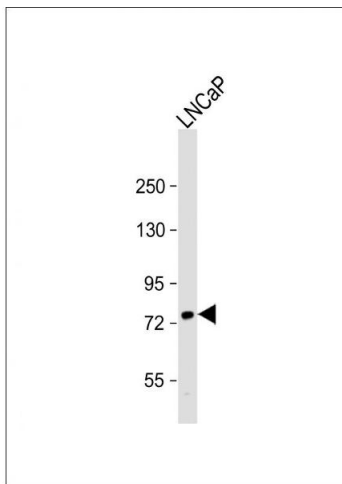
Storage: 4 °C, -20 °C

Expiry Date: 6 months

Publications

Product cited in: Cao, Yang, Wang, Xu, Zhou, Cheng, Liu, Cheng, Long, Gu: "Temporal-spatial expressions of Spy1 in rat sciatic nerve after crush." in: **Cellular and molecular neurobiology**, Vol. 33, Issue 2, pp. 213-21, (2013) ([PubMed](#)).

Images



Western Blotting

Image 1. Anti-PFKL Ctr Antibody at 1:1000 dilution + LNCaP whole cell lysate Lysates/proteins at 20 µg per lane. Secondary Goat Anti-Rabbit IgG, (H+L), Peroxidase conjugated at 1/10000 dilution. Predicted band size : 85 kDa Blocking/Dilution buffer: 5 % NFDm/TBST.