

Datasheet for ABIN6243837  
**anti-PPP2R5B antibody (C-Term)**[Go to Product page](#)

## 2 Images

## Overview

Quantity:	400 µL
Target:	PPP2R5B
Binding Specificity:	AA 466-500, C-Term
Reactivity:	Human
Host:	Rabbit
Clonality:	Polyclonal
Conjugate:	This PPP2R5B antibody is un-conjugated
Application:	Western Blotting (WB), Immunofluorescence (IF)

## Product Details

Immunogen:	This PPP2R5B antibody is generated from a rabbit immunized with a KLH conjugated synthetic peptide between 466-500 amino acids from the C-terminal region of human PPP2R5B.
Clone:	RB51478
Isotype:	Ig Fraction
Purification:	This antibody is purified through a protein A column, followed by peptide affinity purification.

## Target Details

Target:	PPP2R5B
Alternative Name:	PPP2R5B ( <a href="#">PPP2R5B Products</a> )
Background:	The B regulatory subunit might modulate substrate selectivity and catalytic activity, and also

## Target Details

might direct the localization of the catalytic enzyme to a particular subcellular compartment. The phosphorylated form mediates the interaction between AKT1 and PP2A phosphatase leading to dephosphorylation of AKT1 on the 'Thr-308' and 'Ser-373' residues.

Molecular Weight: 57393

UniProt: [Q15173](#)

Pathways: [PI3K-Akt Signaling](#), [ER-Nucleus Signaling](#)

## Application Details

Application Notes: IF: 1:25. WB: 1:1000

Restrictions: For Research Use only

## Handling

Format: Liquid

Buffer: Purified polyclonal antibody supplied in PBS with 0.09 % (W/V) sodium azide.

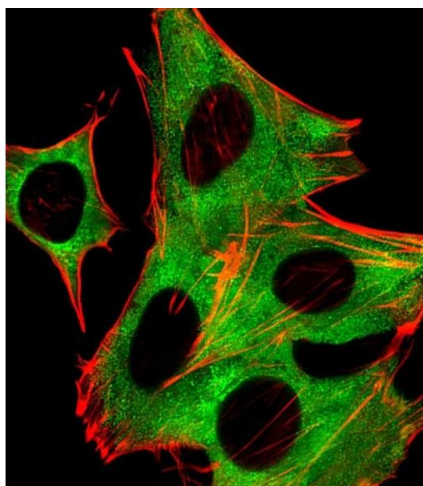
Preservative: Sodium azide

Precaution of Use: This product contains Sodium azide: a POISONOUS AND HAZARDOUS SUBSTANCE which should be handled by trained staff only.

Storage: 4 °C,-20 °C

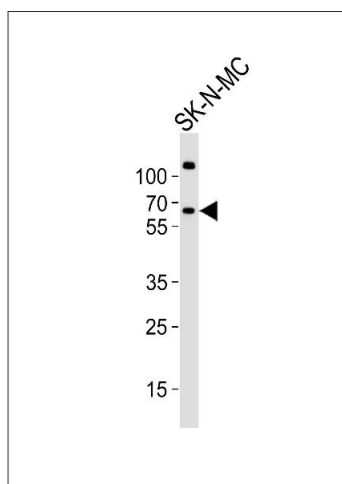
Expiry Date: 6 months

## Images



### Immunofluorescence

**Image 1.** Fluorescent image of SH-SY5Y cells stained with P2R5B Antibody (C-term) (ABIN6243837 and ABIN6577726). (ABIN6243837 and ABIN6577726) was diluted at 1:25 dilution. An Alexa Fluor 488-conjugated goat anti-rabbit IgG at 1:400 dilution was used as the secondary antibody (green). Cytoplasmic actin was counterstained with Alexa Fluor® 555 conjugated with Phalloidin (red).



### Western Blotting

**Image 2.** Western blot analysis of lysate from SK-N-MC cell line, using P2R5B Antibody (C-term) (ABIN6243837 and ABIN6577726). (ABIN6243837 and ABIN6577726) was diluted at 1:1000. A goat anti-rabbit IgG H&L(HRP) at 1:10000 dilution was used as the secondary antibody. Lysate at 20 µg.