

Datasheet for ABIN6243842

anti-GLS2 antibody

2 Images



[Go to Product page](#)

Overview

Quantity:	200 µL
Target:	GLS2
Reactivity:	Human, Mouse
Host:	Mouse
Clonality:	Monoclonal
Conjugate:	This GLS2 antibody is un-conjugated
Application:	Western Blotting (WB), Immunohistochemistry (Paraffin-embedded Sections) (IHC (p))

Product Details

Immunogen:	This GLS2 antibody is generated from a mouse immunized with a recombinant protein of human GLS2.
Clone:	1758CT879-217-60
Isotype:	IgG1 kappa
Purification:	This antibody is purified through a protein G column, followed by dialysis against PBS.

Target Details

Target:	GLS2
Alternative Name:	GLS2 (GLS2 Products)
Background:	Plays an important role in the regulation of glutamine catabolism. Promotes mitochondrial respiration and increases ATP generation in cells by catalyzing the synthesis of glutamate and alpha-ketoglutarate. Increases cellular anti-oxidant function via NADH and glutathione

Target Details

production. May play a role in preventing tumor proliferation.

Molecular Weight: 66323

UniProt: [Q9UI32](#)

Pathways: [Dicarboxylic Acid Transport](#), [Warburg Effect](#)

Application Details

Application Notes: WB: 1:1000-1:2000. IHC-P: 1:25

Restrictions: For Research Use only

Handling

Format: Liquid

Buffer: Purified monoclonal antibody supplied in PBS with 0.09 % (W/V) sodium azide.

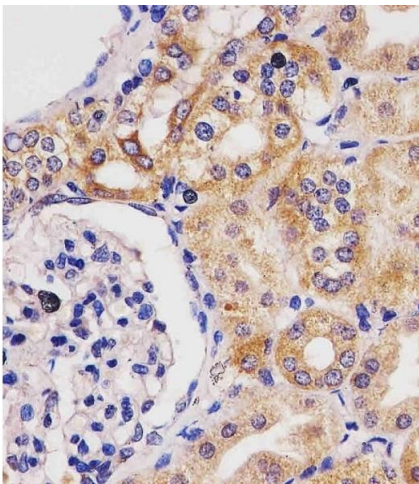
Preservative: Sodium azide

Precaution of Use: This product contains Sodium azide: a POISONOUS AND HAZARDOUS SUBSTANCE which should be handled by trained staff only.

Storage: 4 °C, -20 °C

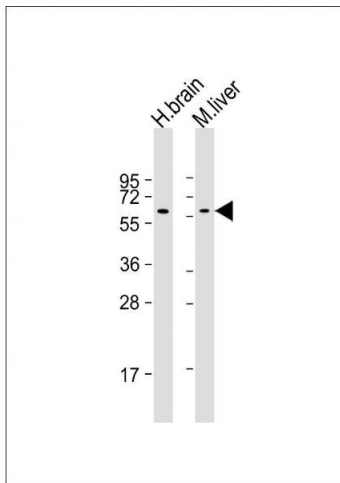
Expiry Date: 6 months

Images



Immunohistochemistry (Paraffin-embedded Sections)

Image 1. (ABIN6243842 and ABIN6577230) staining GLS2 in human kidney tissue sections by Immunohistochemistry (IHC-P - paraformaldehyde-fixed, paraffin-embedded sections). Tissue was fixed with formaldehyde and blocked with 3 % BSA for 0.5 hour at room temperature, antigen retrieval was by heat mediation with a citrate buffer (pH 6). Samples were incubated with primary antibody (1/25) for 1 hour at 37 °C. A undiluted biotinylated goat polyvalent antibody was used as the secondary antibody.



Western Blotting

Image 2. All lanes : Anti-GLS2 Antibody at 1:1000-1:2000 dilution Lane 1: human brain lysate Lane 2: mouse liver lysate Lysates/proteins at 20 μ g per lane. Secondary Goat Anti-mouse IgG, (H+L), Peroxidase conjugated at 1/10000 dilution. Predicted band size : 66 kDa Blocking/Dilution buffer: 5 % NFDM/TBST.