

Datasheet for ABIN6243856
anti-RAD21 antibody (AA 501-535)[Go to Product page](#)

1 Image

Overview

| | |
|----------------------|--------------------------------------|
| Quantity: | 200 µL |
| Target: | RAD21 |
| Binding Specificity: | AA 501-535 |
| Reactivity: | Human, Mouse, Rat |
| Host: | Rabbit |
| Clonality: | Polyclonal |
| Conjugate: | This RAD21 antibody is un-conjugated |
| Application: | Western Blotting (WB) |

Product Details

| | |
|-----------------------|--|
| Immunogen: | This RAD21 antibody is generated from a rabbit immunized with a KLH conjugated synthetic peptide between 501-535 amino acids from human RAD21. |
| Clone: | RB56184 |
| Isotype: | Ig Fraction |
| Predicted Reactivity: | B |
| Purification: | This antibody is purified through a protein A column, followed by peptide affinity purification. |

Target Details

| | |
|-------------------|--|
| Target: | RAD21 |
| Alternative Name: | RAD21 (RAD21 Products) |

Target Details

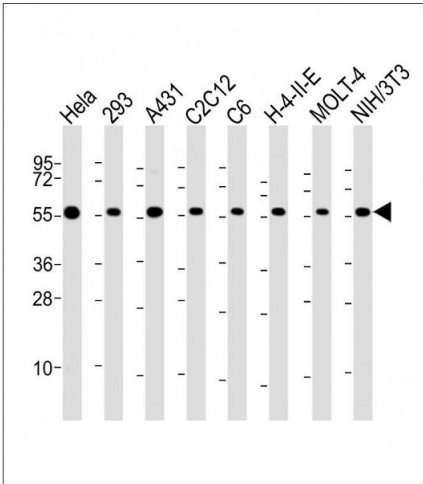
| | |
|-------------------|---|
| Background: | Cleavable component of the cohesin complex, involved in chromosome cohesion during cell cycle, in DNA repair, and in apoptosis. The cohesin complex is required for the cohesion of sister chromatids after DNA replication. The cohesin complex apparently forms a large proteinaceous ring within which sister chromatids can be trapped. At metaphase-anaphase transition, this protein is cleaved by separase/ESPL1 and dissociates from chromatin, allowing sister chromatids to segregate. The cohesin complex may also play a role in spindle pole assembly during mitosis. Also plays a role in apoptosis, via its cleavage by caspase-3/CASP3 or caspase-7/CASP7 during early steps of apoptosis: the C-terminal 64 kDa cleavage product may act as a nuclear signal to initiate cytoplasmic events involved in the apoptotic pathway. |
| Molecular Weight: | 71690 |
| UniProt: | O60216 |
| Pathways: | Positive Regulation of Endopeptidase Activity |

Application Details

| | |
|--------------------|-----------------------|
| Application Notes: | WB: 1:2000 |
| Restrictions: | For Research Use only |

Handling

| | |
|--------------------|--|
| Format: | Liquid |
| Buffer: | Purified polyclonal antibody supplied in PBS with 0.09 % (W/V) sodium azide. |
| Preservative: | Sodium azide |
| Precaution of Use: | This product contains Sodium azide: a POISONOUS AND HAZARDOUS SUBSTANCE which should be handled by trained staff only. |
| Storage: | 4 °C,-20 °C |
| Expiry Date: | 6 months |



Western Blotting

Image 1. All lanes : Anti-RAD21 Antibody (C-Term) at 1:2000 dilution Lane 1: HeLa whole cell lysate Lane 2: 293 whole cell lysate Lane 3: A431 whole cell lysate Lane 4: C2C12 whole cell lysate Lane 5: C6 whole cell lysate Lane 6: H-4-II-E whole cell lysate Lane 7: MOLT-4 whole cell lysate Lane 8: NIH/3T3 whole cell lysate Lysates/proteins at 20 µg per lane. Secondary Goat Anti-Rabbit IgG, (H+L), Peroxidase conjugated at 1/10000 dilution. Predicted band size : 72 kDa Blocking/Dilution buffer: 5 % NFDM/TBST.