



[Go to Product page](#)

Datasheet for ABIN6243857

anti-EPH Receptor B3 antibody (AA 350-382)

1 Image

Overview

Quantity:	400 µL
Target:	EPH Receptor B3 (EPHB3)
Binding Specificity:	AA 350-382
Reactivity:	Human, Mouse
Host:	Rabbit
Clonality:	Polyclonal
Conjugate:	This EPH Receptor B3 antibody is un-conjugated
Application:	Western Blotting (WB)

Product Details

Immunogen:	This Mouse Ephb3 antibody is generated from a rabbit immunized with a KLH conjugated synthetic peptide between 350-382 amino acids from the Central region of Mouse Ephb3.
Clone:	RB50405
Isotype:	Ig Fraction
Purification:	This antibody is purified through a protein A column, followed by peptide affinity purification.

Target Details

Target:	EPH Receptor B3 (EPHB3)
Alternative Name:	Ephb3 (EPHB3 Products)
Background:	Receptor tyrosine kinase which binds promiscuously transmembrane ephrin-B family ligands

Target Details

residing on adjacent cells, leading to contact-dependent bidirectional signaling into neighboring cells. The signaling pathway downstream of the receptor is referred to as forward signaling while the signaling pathway downstream of the ephrin ligand is referred to as reverse signaling. Generally has an overlapping and redundant function with EPHB2. Like EPHB2, functions in axon guidance during development regulating for instance the neurons forming the corpus callosum and the anterior commissure, 2 major interhemispheric connections between the temporal lobes of the cerebral cortex. Beside its role in axon guidance plays also an important redundant role with other ephrin-B receptors in development and maturation of dendritic spines and the formation of excitatory synapses. Controls other aspects of development through regulation of cell migration and positioning. This includes angiogenesis, palate development and thymic epithelium development for instance. Forward and reverse signaling through the EFNB2/EPHB3 complex also regulate migration and adhesion of cells that tubularize the urethra and septate the cloaca. Finally, plays an important role in intestinal epithelium differentiation segregating progenitor from differentiated cells in the crypt.

Molecular Weight: 109662

UniProt: [P54754](#)

Pathways: [RTK Signaling](#)

Application Details

Application Notes: WB: 1:500-1:1000

Restrictions: For Research Use only

Handling

Format: Liquid

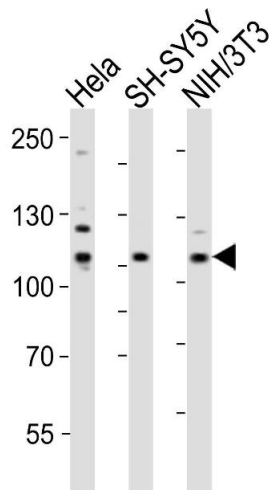
Buffer: Purified polyclonal antibody supplied in PBS with 0.09 % (W/V) sodium azide.

Preservative: Sodium azide

Precaution of Use: This product contains Sodium azide: a POISONOUS AND HAZARDOUS SUBSTANCE which should be handled by trained staff only.

Storage: 4 °C, -20 °C

Expiry Date: 6 months



Western Blotting

Image 1. Western blot analysis of lysates from HeLa, SH-SY5Y, mouse NIH/3T3 cell line (from left to right), using Ephb3 Antibody (Center) (ABIN6243857 and ABIN6577761). (ABIN6243857 and ABIN6577761) was diluted at 1:1000 at each lane. A goat anti-rabbit IgG H&L(HRP) at 1:10000 dilution was used as the secondary antibody. Lysates at 20 μ g per lane.