

Datasheet for ABIN6243858
anti-EPH Receptor B4 antibody (C-Term)[Go to Product page](#)

1 Image

Overview

Quantity:	400 µL
Target:	EPH Receptor B4 (EPHB4)
Binding Specificity:	AA 889-923, C-Term
Reactivity:	Human, Mouse
Host:	Rabbit
Clonality:	Polyclonal
Application:	Western Blotting (WB)

Product Details

Immunogen:	This Mouse Ephb4 antibody is generated from a rabbit immunized with a KLH conjugated synthetic peptide between 889-923 amino acids from the C-terminal region of Mouse Ephb4.
Clone:	RB50408
Isotype:	Ig Fraction
Purification:	This antibody is purified through a protein A column, followed by peptide affinity purification.

Target Details

Target:	EPH Receptor B4 (EPHB4)
Alternative Name:	Ephb4 (EPHB4 Products)
Background:	Receptor tyrosine kinase which binds promiscuously transmembrane ephrin-B family ligands residing on adjacent cells, leading to contact-dependent bidirectional signaling into neighboring cells. The signaling pathway downstream of the receptor is referred to as forward signaling

Target Details

while the signaling pathway downstream of the ephrin ligand is referred to as reverse signaling. Together with its cognate ligand/functional ligand EFNB2 plays a central role in heart morphogenesis and angiogenesis through regulation of cell adhesion and cell migration. EPHB4- mediated forward signaling controls cellular repulsion and segregation from EFNB2-expressing cells. Plays also a role in postnatal blood vessel remodeling, morphogenesis and permeability and is thus important in the context of tumor angiogenesis.

Molecular Weight: 108848

UniProt: [P54761](#)

Pathways: [RTK Signaling](#)

Application Details

Application Notes: WB: 1:1000

Restrictions: For Research Use only

Handling

Format: Liquid

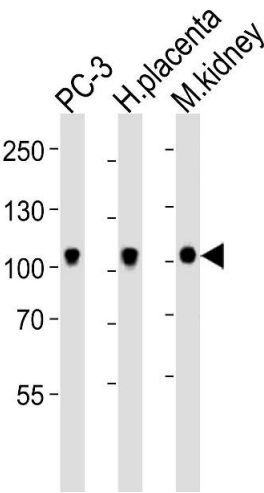
Buffer: Purified polyclonal antibody supplied in PBS with 0.09 % (W/V) sodium azide.

Preservative: Sodium azide

Precaution of Use: This product contains Sodium azide: a POISONOUS AND HAZARDOUS SUBSTANCE which should be handled by trained staff only.

Storage: 4 °C,-20 °C

Expiry Date: 6 months



Western Blotting

Image 1. Western blot analysis of lysates from PC-3 cell line, human placenta, mouse kidney tissue lysate (from left to right), using Ephb4 Antibody (C-term) (ABIN6243858 and ABIN6577663). (ABIN6243858 and ABIN6577663) was diluted at 1:1000 at each lane. A goat anti-rabbit IgG H&L(HRP) at 1:10000 dilution was used as the secondary antibody. Lysates at 20 µg per lane.