

Datasheet for ABIN6243863  
**anti-PYGL antibody (AA 809-843)**[Go to Product page](#)

## 2 Images

## Overview

Quantity:	200 µL
Target:	PYGL
Binding Specificity:	AA 809-843
Reactivity:	Human, Mouse
Host:	Rabbit
Clonality:	Polyclonal
Conjugate:	This PYGL antibody is un-conjugated
Application:	Western Blotting (WB), Immunohistochemistry (Paraffin-embedded Sections) (IHC (p))

## Product Details

Immunogen:	This PYGL antibody is generated from a rabbit immunized with a KLH conjugated synthetic peptide between 809-843 amino acids from human PYGL.
Clone:	RB53470
Isotype:	Ig Fraction
Purification:	This antibody is purified through a protein A column, followed by peptide affinity purification.

## Target Details

Target:	PYGL
Alternative Name:	PYGL ( <a href="#">PYGL Products</a> )
Background:	Phosphorylase is an important allosteric enzyme in carbohydrate metabolism. Enzymes from

## Target Details

different sources differ in their regulatory mechanisms and in their natural substrates. However, all known phosphorylases share catalytic and structural properties.

Molecular Weight: 97149

UniProt: [P06737](#)

Pathways: [Carbohydrate Homeostasis](#), [Cellular Glucan Metabolic Process](#)

## Application Details

Application Notes: WB: 1:2000. IHC-P: 1:25

Restrictions: For Research Use only

## Handling

Format: Liquid

Buffer: Purified polyclonal antibody supplied in PBS with 0.09 % (W/V) sodium azide.

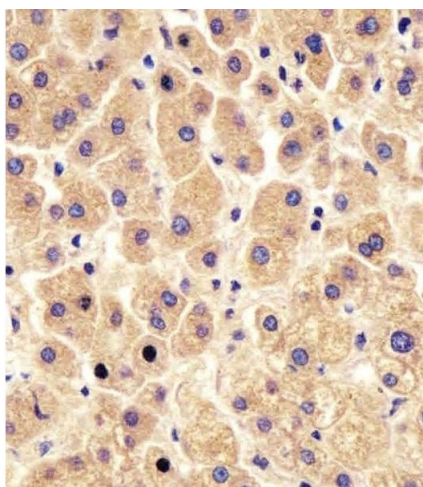
Preservative: Sodium azide

Precaution of Use: This product contains Sodium azide: a POISONOUS AND HAZARDOUS SUBSTANCE which should be handled by trained staff only.

Storage: 4 °C, -20 °C

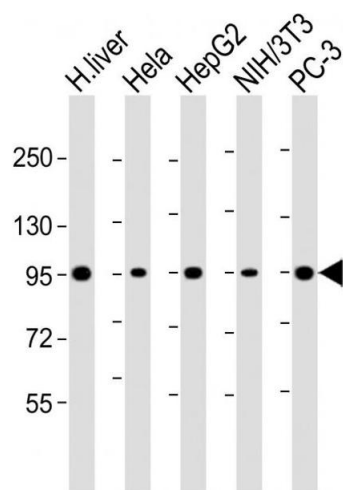
Expiry Date: 6 months

## Images



### Immunohistochemistry (Paraffin-embedded Sections)

**Image 1.** (ABIN6243863 and ABIN6578454) staining PYGL in human liver tissue sections by Immunohistochemistry (IHC-P - paraformaldehyde-fixed, paraffin-embedded sections). Tissue was fixed with formaldehyde and blocked with 3 % BSA for 0.5 hour at room temperature, antigen retrieval was by heat mediation with a citrate buffer (pH 6). Samples were incubated with primary antibody (1/25) for 1 hours at 37 °C. A undiluted biotinylated goat polyvalent antibody was used as the secondary antibody.



Western Blotting

**Image 2.** All lanes : Anti-PYGL Antibody (C-Term) at 1:2000 dilution Lane 1: human liver lysate Lane 2: Hela whole cell lysate Lane 3: HepG2 whole cell lysate Lane 4: NIH/3T3 whole cell lysate Lane 5: PC-3 whole cell lysate Lysates/proteins at 20 µg per lane. Secondary Goat Anti-Rabbit IgG, (H+L), Peroxidase conjugated at 1/10000 dilution. Predicted band size : 97 kDa Blocking/Dilution buffer: 5 % NFDM/TBST.