

Datasheet for ABIN6243867  
**anti-MSI1 antibody (AA 81-113)**



[Go to Product page](#)

1 Image

## Overview

Quantity:	400 µL
Target:	MSI1
Binding Specificity:	AA 81-113
Reactivity:	Human, Mouse
Host:	Rabbit
Clonality:	Polyclonal
Conjugate:	This MSI1 antibody is un-conjugated
Application:	Western Blotting (WB)

## Product Details

Immunogen:	This mouse Msi1 antibody is generated from a rabbit immunized with a KLH conjugated synthetic peptide between 81-113 amino acids from the Central region of mouse Msi1.
Clone:	RB51509
Isotype:	Ig Fraction
Predicted Reactivity:	Rat
Purification:	This antibody is purified through a protein A column, followed by peptide affinity purification.

## Target Details

Target:	MSI1
Alternative Name:	Msi1 ( <a href="#">MSI1 Products</a> )

## Target Details

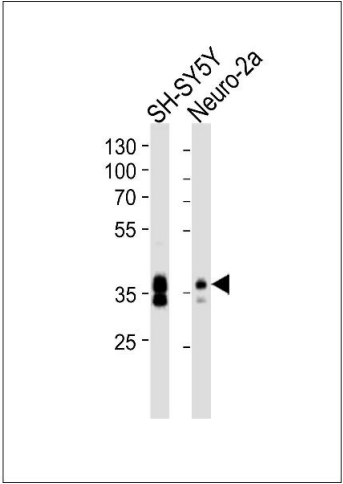
Background:	RNA binding protein that regulates the expression of target mRNAs at the translation level. Regulates expression of the NOTCH1 antagonist NUMB. Binds RNA containing the sequence 5'-GUUAGUUAGUUAGUU-3' and other sequences containing the pattern 5'-[GA]U(1-3)AGU-3'. May play a role in the proliferation and maintenance of stem cells in the central nervous system.
Molecular Weight:	39119
UniProt:	<a href="#">Q61474</a>
Pathways:	<a href="#">Stem Cell Maintenance</a>

## Application Details

Application Notes:	WB: 1:1000
Restrictions:	For Research Use only

## Handling

Format:	Liquid
Buffer:	Purified polyclonal antibody supplied in PBS with 0.09 % (W/V) sodium azide.
Preservative:	Sodium azide
Precaution of Use:	This product contains Sodium azide: a POISONOUS AND HAZARDOUS SUBSTANCE which should be handled by trained staff only.
Storage:	4 °C,-20 °C
Expiry Date:	6 months



### Western Blotting

**Image 1.** Western blot analysis of lysates from SH-SY5Y, Neuro-2a cell line (from left to right), using (Mouse) Msi1 Antibody (Center) (ABIN6243867 and ABIN6577735). (ABIN6243867 and ABIN6577735) was diluted at 1:1000 at each lane. A goat anti-rabbit IgG H&L(HRP) at 1:10000 dilution was used as the secondary antibody. Lysates at 20 µg per lane.