

Datasheet for ABIN6243869
anti-MSI1 antibody (AA 144-176)



[Go to Product page](#)

1 Image

Overview

Quantity:	400 µL
Target:	MSI1
Binding Specificity:	AA 144-176
Reactivity:	Human
Host:	Rabbit
Clonality:	Polyclonal
Conjugate:	This MSI1 antibody is un-conjugated
Application:	Western Blotting (WB)

Product Details

Immunogen:	This MSI1 antibody is generated from a rabbit immunized with a KLH conjugated synthetic peptide between 144-176 amino acids from the Central region of human MSI1.
Clone:	RB51230
Isotype:	Ig Fraction
Predicted Reactivity:	M, Rat
Purification:	This antibody is purified through a protein A column, followed by peptide affinity purification.

Target Details

Target:	MSI1
Alternative Name:	MSI1 (MSI1 Products)

Target Details

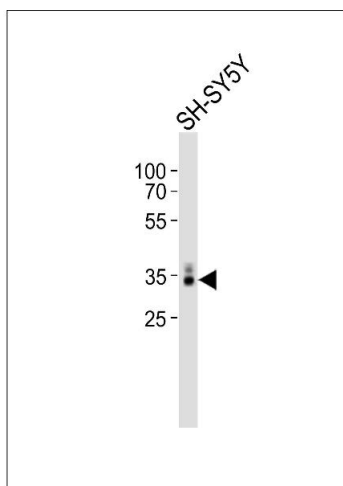
Background:	RNA binding protein that regulates the expression of target mRNAs at the translation level. Regulates expression of the NOTCH1 antagonist NUMB. Binds RNA containing the sequence 5'-GUUAGUUAGUUAGUU-3' and other sequences containing the pattern 5'-[GA]U(1-3)AGU-3'. May play a role in the proliferation and maintenance of stem cells in the central nervous system (By similarity).
Molecular Weight:	39125
UniProt:	O43347
Pathways:	Stem Cell Maintenance

Application Details

Application Notes:	WB: 1:1000
Restrictions:	For Research Use only

Handling

Format:	Liquid
Buffer:	Purified polyclonal antibody supplied in PBS with 0.09 % (W/V) sodium azide.
Preservative:	Sodium azide
Precaution of Use:	This product contains Sodium azide: a POISONOUS AND HAZARDOUS SUBSTANCE which should be handled by trained staff only.
Storage:	4 °C,-20 °C
Expiry Date:	6 months



Western Blotting

Image 1. Western blot analysis of lysate from SH-SY5Y cell line, using MSI1 Antibody (Center) (ABIN6243869 and ABIN6577772). (ABIN6243869 and ABIN6577772) was diluted at 1:1000. A goat anti-rabbit IgG H&L(HRP) at 1:10000 dilution was used as the secondary antibody. Lysate at 20 µg.